

Anti-ASH2L antibody

Cat. No.	ml221917
Package	25 µl/100 µl/200 µl
Storage	-20°C, pH7.4 PBS, 0.05% NaN ₃ , 40% Glycerol

Product overview

Description	Anti-ASH2L rabbit polyclonal antibody
Applications	ELISA, IHC
Immunogen	Fusion protein of human ASH2L
Reactivity	Human, Mouse
Content	0.4 mg/ml
Host species	Rabbit
Ig class	Immunogen-specific rabbit IgG
Purification	Antigen affinity purification

Target information

Symbol	ASH2L
Full name	ash2 (absent, small, or homeotic)-like (Drosophila)
Synonyms	ASH2; Bre2; ASH2L1; ASH2L2
Swissprot	Q9UBL3

Target Background

The human ASH2L gene encodes a 628 amino acid protein known as ASH2L1, or isoform 1, which contains a nuclear localization signal and PHD finger motif, suggesting that the gene product functions as a transcription regulator. Alternative splicing results in a shorter isoform 2, designated ASH2L2, which is missing the first 94 amino acid residues found in ASH2L1. Human ASH2L proteins are 60% homologous to *Drosophila* ash2, which positively regulates expression of certain genes in early development, and contain similar, but not identical, domains, including a zinc finger motif. ASH2L is highly expressed in fetal liver, testis and leukemia cell lines with erythroid and megakaryocytic potential, such as K562, Hel and Dami.

订购热线: 4008-898-798

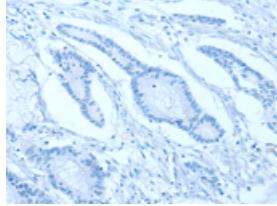
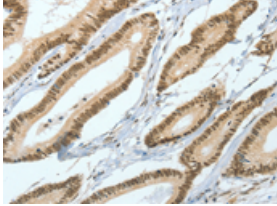
Applications

Immunohistochemistry

Predicted cell location: Nucleus

Positive control: Human colon cancer

Recommended dilution: 50-200

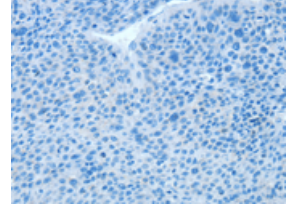
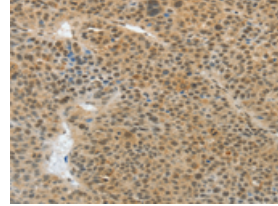


The image on the left is immunohistochemistry of paraffin-embedded Human colon cancer tissue using ml221917(ASH2L Antibody) at dilution 1/50, on the right is treated with fusion protein. (Original magnification: ×200)

Predicted cell location: Nucleus

Positive control: Human liver cancer

Recommended dilution: 50-200



The image on the left is immunohistochemistry of paraffin-embedded Human liver cancer tissue using ml221917(ASH2L Antibody) at dilution 1/50, on the right is treated with fusion protein. (Original magnification: ×200)

ELISA

Recommended dilution: 1000-5000

联系电话: 4008-898-798, 021-61725725

联系QQ: 2881505695, 2881505696

邮箱: mlbio_cn@yeah.net

网址: www.mlbio.cn