

Anti-ABI3BP antibody

Cat. No.	ml221928
Package	25 µl/100 µl/200 µl
Storage	-20°C, pH7.4 PBS, 0.05% NaN ₃ , 40% Glycerol

Product overview

Description	Anti-ABI3BP rabbit polyclonal antibody
Applications	ELISA, IHC
Immunogen	Fusion protein of human ABI3BP
Reactivity	Human
Content	0.9 mg/ml
Host species	Rabbit
Ig class	Immunogen-specific rabbit IgG
Purification	Antigen affinity purification

Target information

Symbol	ABI3BP
Full name	ABI family, member 3 (NESH) binding protein
Synonyms	TARSH; NESHBP
Swissprot	Q7Z7G0

Target Background

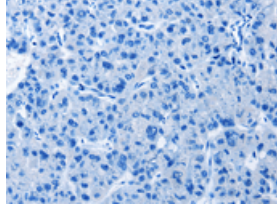
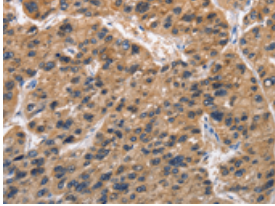
A target of NESH-SH3/Abi3bp (TARSH) was originally identified as an SH3 domain-binding molecule of the NESH-SH3/Abi3 protein that is involved in Rac-dependent actin polymerization. In recent studies, TARSH gene expression was dramatically induced in mouse embryonic fibroblasts (MEFs) replicative senescence and suppressed in human lung carcinoma specimens and thyroid carcinomas. However, the molecular mechanism underlying the regulation of TARSH in tumorigenesis remains unclear.

订购热线: 4008-898-798

Applications

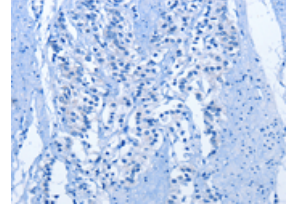
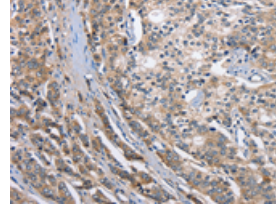
Immunohistochemistry

Predicted cell location: Cytoplasm
Positive control: Human liver cancer
Recommended dilution: 50-200



The image on the left is immunohistochemistry of paraffin-embedded Human liver cancer tissue using ml221928(ABI3BP Antibody) at dilution 1/50, on the right is treated with fusion protein. (Original magnification: $\times 200$)

Predicted cell location: Cytoplasm
Positive control: Human prostate cancer
Recommended dilution: 50-200



The image on the left is immunohistochemistry of paraffin-embedded Human prostate cancer tissue using ml221928(ABI3BP Antibody) at dilution 1/50, on the right is treated with fusion protein. (Original magnification: $\times 200$)

ELISA

Recommended dilution: 2000-5000

联系电话: 4008-898-798, 021-61725725

联系QQ: 2881505695, 2881505696

邮箱: mlbio_cn@yeah.net

网址: www.mlbio.cn