

Anti-CPA2 antibody

Cat. No.	ml222139
Package	25 µl/100 µl/200 µl
Storage	-20°C, pH7.4 PBS, 0.05% NaN ₃ , 40% Glycerol

Product overview

Description	Anti-CPA2 rabbit polyclonal antibody
Applications	ELISA, IHC
Immunogen	Fusion protein of human CPA2
Reactivity	Human, Mouse, Rat
Content	0.5 mg/ml
Host species	Rabbit
Ig class	Immunogen-specific rabbit IgG
Purification	Antigen affinity purification

Target information

Symbol	CPA2
Full name	carboxypeptidase A2 (pancreatic)
Synonyms	
Swissprot	P48052

Target Background

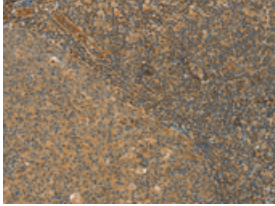
Three different forms of human pancreatic procarboxypeptidase A have been isolated. The encoded protein represents the A2 form, which is a monomeric protein with different biochemical properties from the A1 and A3 forms. The A2 form of pancreatic procarboxypeptidase acts on aromatic C-terminal residues and is a secreted protein.

订购热线: 4008-898-798

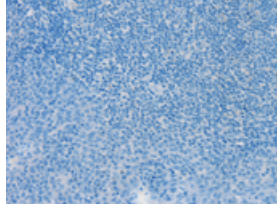
Applications

Immunohistochemistry

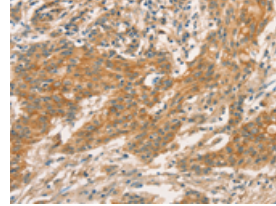
Predicted cell location: Cytoplasm
Positive control: Human tonsil
Recommended dilution: 50-200



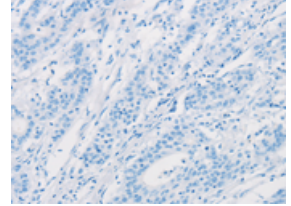
The image on the left is immunohistochemistry of paraffin-embedded Human tonsil tissue using ml222139(CPA2 Antibody) at dilution 1/40, on the right is treated with fusion protein. (Original magnification: ×200)



Predicted cell location: Cytoplasm
Positive control: Human gastric cancer
Recommended dilution: 50-200



The image on the left is immunohistochemistry of paraffin-embedded Human gastric cancer tissue using ml222139(CPA2 Antibody) at dilution 1/40, on the right is treated with fusion protein. (Original magnification: ×200)



ELISA

Recommended dilution: 2000-5000

联系电话: 4008-898-798, 021-61725725

联系QQ: 2881505695, 2881505696

邮箱: mlbio_cn@yeah.net

网址: www.mlbio.cn