

Anti-DDIT4L antibody

Cat. No.	ml222221
Package	25 µl/100 µl/200 µl
Storage	-20°C, pH7.4 PBS, 0.05% NaN ₃ , 40% Glycerol

Product overview

Description	Anti-DDIT4L rabbit polyclonal antibody
Applications	ELISA, IHC
Immunogen	Fusion protein of human DDIT4L
Reactivity	Human, Mouse, Rat
Content	0.4 mg/ml
Host species	Rabbit
Ig class	Immunogen-specific rabbit IgG
Purification	Antigen affinity purification

Target information

Symbol	DDIT4L
Full name	DNA-damage-inducible transcript 4-like
Synonyms	REDD2; Rtp801L
Swissprot	Q96D03

Target Background

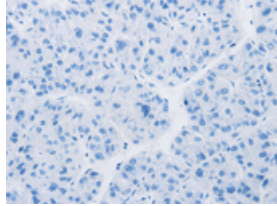
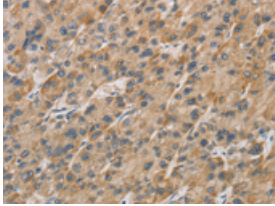
REDD-2 (regulated in development and DNA damage response 2), also designated Rtp801L or DDIT4L (DNA-damage-inducible transcript 4-like), is a 193 amino acid cytoplasmic protein belonging to the DDIT4 family and is predominantly expressed in skeletal muscle. Considered a stress-induced protein, REDD-2 is a negative regulator of the mTOR (mammalian target of rapamycin) pathway. mTOR is a serine/threonine kinase that plays an essential role in cell growth control and is an important regulator of skeletal muscle size. Highly expressed in human atherosclerotic lesions and macrophages, REDD-2 mediates monocyte cell death through reduction of Trx (thioredoxin-1) expression. REDD2 expression in macrophages increases oxidized LDL (oxLDL)-induced cell death, suggesting that REDD2 may play a critical role in arterial pathology.

订购热线: 4008-898-798

Applications

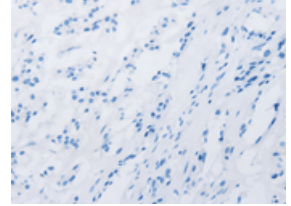
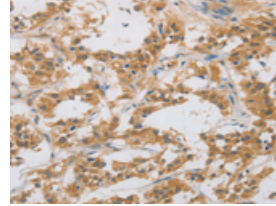
Immunohistochemistry

Predicted cell location: Cytoplasm
Positive control: Human liver cancer
Recommended dilution: 25-100



The image on the left is immunohistochemistry of paraffin-embedded Human liver cancer tissue using ml222221(DDIT4L Antibody) at dilution 1/20, on the right is treated with fusion protein. (Original magnification: ×200)

Predicted cell location: Cytoplasm
Positive control: Human thyroid cancer
Recommended dilution: 25-100



The image on the left is immunohistochemistry of paraffin-embedded Human thyroid cancer tissue using ml222221(DDIT4L Antibody) at dilution 1/20, on the right is treated with fusion protein. (Original magnification: ×200)

ELISA

Recommended dilution: 1000-2000

联系电话: 4008-898-798, 021-61725725

联系QQ: 2881505695, 2881505696

邮箱: mlbio_cn@yeah.net

网址: www.mlbio.cn