

Anti-ERCC6L antibody

Cat. No.	ml222312
Package	25 µl/100 µl/200 µl
Storage	-20°C, pH7.4 PBS, 0.05% NaN ₃ , 40% Glycerol

Product overview

Description	Anti-ERCC6L rabbit polyclonal antibody
Applications	ELISA, IHC
Immunogen	Fusion protein of human ERCC6L
Reactivity	Human
Content	0.5 mg/ml
Host species	Rabbit
Ig class	Immunogen-specific rabbit IgG
Purification	Antigen affinity purification

Target information

Symbol	ERCC6L
Full name	excision repair cross-complementation group 6-like
Synonyms	PICH; RAD26L
Swissprot	Q2NKX8

Target Background

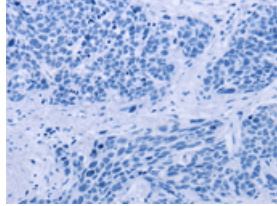
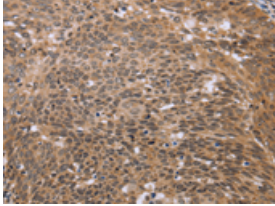
PICH (Plk1-interacting checkpoint helicase), also known as DNA excision repair protein ERCC-6-like (ERCC6L) or tumor antigen BJ-HCC-15, is a 1,250 amino acid protein belonging to the SNF2/RAD54 helicase family. PICH is a DNA helicase and an essential component of the spindle assembly checkpoint. During mitosis, PICH recruits MAD2 to kinetochores and also regulates the tension on centromeric chromatin. PICH is concentrated in between the kinetochores in prometaphase cells, while in metaphase it localizes to the thin threads composed of catenated centromeric DNA that stretch between sister kinetochores. PICH is phosphorylated by Plk, which prevents PICH from associating with chromosome arms and restricts the localization of PICH to the kinetochore-centromere region. PICH/Plk interaction is also required for correct Plk localization to the kinetochore. PICH contains one helicase ATP-binding domain, two TPR repeats and one helicase C-terminal domain.

订购热线: 4008-898-798

Applications

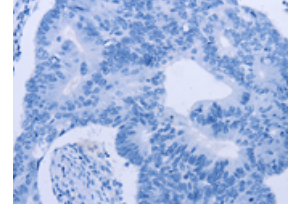
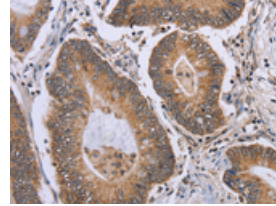
Immunohistochemistry

Predicted cell location: Nucleus and Cytoplasm
Positive control: Human cervical cancer
Recommended dilution: 50-200



The image on the left is immunohistochemistry of paraffin-embedded Human cervical cancer tissue using ml222312(ERCC6L Antibody) at dilution 1/30, on the right is treated with fusion protein. (Original magnification: ×200)

Predicted cell location: Nucleus and Cytoplasm
Positive control: Human colon cancer
Recommended dilution: 50-200



The image on the left is immunohistochemistry of paraffin-embedded Human colon cancer tissue using ml222312(ERCC6L Antibody) at dilution 1/30, on the right is treated with fusion protein. (Original magnification: ×200)

ELISA

Recommended dilution: 2000-5000

联系电话: 4008-898-798, 021-61725725

联系QQ: 2881505695, 2881505696

邮箱: mlbio_cn@yeah.net

网址: www.mlbio.cn