

## Anti-EXTL3 antibody

<b>Cat. No.</b>	ml222325
<b>Package</b>	25 µl/100 µl/200 µl
<b>Storage</b>	-20°C, pH7.4 PBS, 0.05% NaN <sub>3</sub> , 40% Glycerol

### Product overview

<b>Description</b>	Anti-EXTL3 rabbit polyclonal antibody
<b>Applications</b>	ELISA, IHC
<b>Immunogen</b>	Fusion protein of human EXTL3
<b>Reactivity</b>	Human, Mouse
<b>Content</b>	0.7 mg/ml
<b>Host species</b>	Rabbit
<b>Ig class</b>	Immunogen-specific rabbit IgG
<b>Purification</b>	Antigen affinity purification

### Target information

<b>Symbol</b>	EXTL3
<b>Full name</b>	exostosin-like glycosyltransferase 3
<b>Synonyms</b>	RPR; BOTV; REGR; EXTR1; EXTL1L
<b>Swissprot</b>	O43909

### Target Background

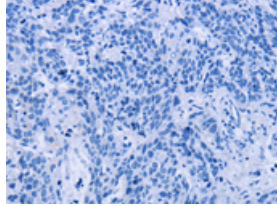
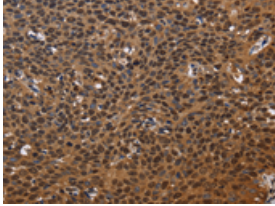
This gene encodes a single-pass membrane protein which functions as a glycosyltransferase. The encoded protein catalyzes the transfer of N-acetylglucosamine to glycosaminoglycan chains. This reaction is important in heparin and heparan sulfate synthesis. Alternative splicing results in the multiple transcript variants.

订购热线: 4008-898-798

### Applications

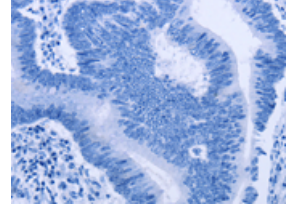
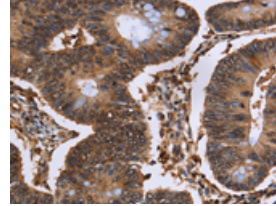
#### Immunohistochemistry

Predicted cell location: Nucleus and Cytoplasm  
Positive control: Human cervical cancer  
Recommended dilution: 100-300



The image on the left is immunohistochemistry of paraffin-embedded Human cervical cancer tissue using ml222325(EXTL3 Antibody) at dilution 1/50, on the right is treated with fusion protein. (Original magnification: ×200)

Predicted cell location: Nucleus and Cytoplasm  
Positive control: Human colon cancer  
Recommended dilution: 100-300



The image on the left is immunohistochemistry of paraffin-embedded Human colon cancer tissue using ml222325(EXTL3 Antibody) at dilution 1/50, on the right is treated with fusion protein. (Original magnification: ×200)

#### ELISA

Recommended dilution: 2000-10000

联系电话: 4008-898-798, 021-61725725

联系QQ: 2881505695, 2881505696

邮箱: [mlbio\\_cn@yeah.net](mailto:mlbio_cn@yeah.net)

网址: [www.mlbio.cn](http://www.mlbio.cn)