

Anti-GABPB2 antibody

Cat. No.	ml222395
Package	25 µl/100 µl/200 µl
Storage	-20°C, pH7.4 PBS, 0.05% NaN ₃ , 40% Glycerol

Product overview

Description	Anti-GABPB2 rabbit polyclonal antibody
Applications	ELISA, IHC
Immunogen	Fusion protein of human GABPB2
Reactivity	Human, Mouse
Content	0.5 mg/ml
Host species	Rabbit
Ig class	Immunogen-specific rabbit IgG
Purification	Antigen affinity purification

Target information

Symbol	GABPB2
Full name	GA binding protein transcription factor, beta subunit 2
Synonyms	RP11-68I18.1
Swissprot	Q8TAK5

Target Background

GA-binding protein subunit beta-2 is a protein that in humans is encoded by the GABPB2 gene. The GABPB variant containing a C-terminal leucine zipper motif, which they called GABP-beta, can homodimerize and form a transcriptionally active heterotetrameric complex with GABPA. The variant lacking this motif, which they called GABP-gamma, can form heterodimers but cannot form transcriptionally active heterotetramers with GABPA.

订购热线: 4008-898-798

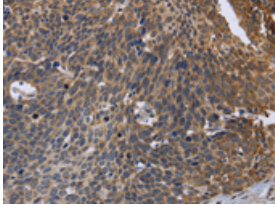
Applications

Immunohistochemistry

Predicted cell location: Cytoplasm

Positive control: Human cervical cancer

Recommended dilution: 50-200

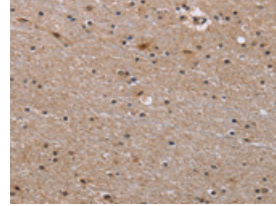


The image is immunohistochemistry of paraffin-embedded Human cervical cancer tissue using ml222395(GABPB2 Antibody) at dilution 1/30. (Original magnification: ×200)

Predicted cell location: Cytoplasm

Positive control: Human brain

Recommended dilution: 50-200



The image is immunohistochemistry of paraffin-embedded Human brain tissue using ml222395(GABPB2 Antibody) at dilution 1/30. (Original magnification: ×200)

ELISA

Recommended dilution: 2000-5000

联系电话: 4008-898-798, 021-61725725

联系QQ: 2881505695, 2881505696

邮箱: mlbio_cn@yeah.net

网址: www.mlbio.cn