

## Anti-DNAJC15 antibody

<b>Cat. No.</b>	ml222417
<b>Package</b>	25 µl/100 µl/200 µl
<b>Storage</b>	-20°C, pH7.4 PBS, 0.05% NaN <sub>3</sub> , 40% Glycerol

### Product overview

<b>Description</b>	Anti-DNAJC15 rabbit polyclonal antibody
<b>Applications</b>	ELISA, IHC
<b>Immunogen</b>	Fusion protein of human DNAJC15
<b>Reactivity</b>	Human, Mouse
<b>Content</b>	0.3 mg/ml
<b>Host species</b>	Rabbit
<b>Ig class</b>	Immunogen-specific rabbit IgG
<b>Purification</b>	Antigen affinity purification

### Target information

<b>Symbol</b>	DNAJC15
<b>Full name</b>	DnaJ (Hsp40) homolog, subfamily C, member 15
<b>Synonyms</b>	MCJ; HSD18; DNAJD1
<b>Swissprot</b>	Q9Y5T4

### Target Background

The DnaJ family is one of the largest of all the chaperone families and has evolved with diverse cellular localization and functions. The presence of a J domain defines a protein as a member of the DnaJ family. DnaJ heat shock induced proteins are from the bacterium *Escherichia coli* and are under the control of the htpR regulatory protein. The DnaJ proteins play a critical role in the HSP 70 chaperone machine by interacting with HSP 70 to stimulate ATP hydrolysis. DnaJ proteins are important mediators of proteolysis and are involved in the regulation of protein degradation, exocytosis and endocytosis. MCJ (methylation-controlled J protein), also known as HSD18, DNAJD1 or DNAJC15, is a 150 amino acid ubiquitously expressed single-pass membrane protein containing one J domain. Localizing to the golgi apparatus and only present in vertebrates, MCJ may be associated with increased chemotherapeutic resistance in ovarian cancer by inducing expression of the Mdr drug transporter and preventing intracellular drug accumulation.

订购热线: 4008-898-798

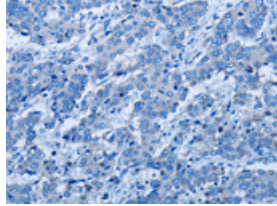
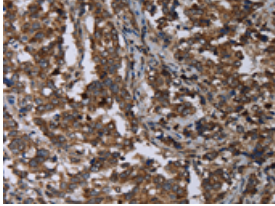
#### Applications

##### Immunohistochemistry

Predicted cell location: Cytoplasm

Positive control: Human liver cancer

Recommended dilution: 50-200



The image on the left is immunohistochemistry of paraffin-embedded Human liver cancer tissue using ml222417(DNAJC15 Antibody) at dilution 1/40, on the right is treated with fusion protein. (Original magnification: ×200)

##### ELISA

Recommended dilution: 2000-5000

联系电话: 4008-898-798, 021-61725725

联系QQ: 2881505695, 2881505696

邮箱: [mlbio\\_cn@yeah.net](mailto:mlbio_cn@yeah.net)

网址: [www.mlbio.cn](http://www.mlbio.cn)