

Anti-GK antibody

Cat. No.	ml222429
Package	25 µl/100 µl/200 µl
Storage	-20°C, pH7.4 PBS, 0.05% NaN ₃ , 40% Glycerol

Product overview

Description	Anti-GK rabbit polyclonal antibody
Applications	ELISA, IHC
Immunogen	Fusion protein of human GK
Reactivity	Human, Mouse, Rat
Content	0.5 mg/ml
Host species	Rabbit
Ig class	Immunogen-specific rabbit IgG
Purification	Antigen affinity purification

Target information

Symbol	GK
Full name	glycerol kinase
Synonyms	GK1; GKD
Swissprot	P32189

Target Background

The protein encoded by this gene belongs to the FGGY kinase family. This protein is a key enzyme in the regulation of glycerol uptake and metabolism. It catalyzes the phosphorylation of glycerol by ATP, yielding ADP and glycerol-3-phosphate. Mutations in this gene are associated with glycerol kinase deficiency (GKD). Alternatively spliced transcript variants encoding different isoforms have been found for this gene.

订购热线: 4008-898-798

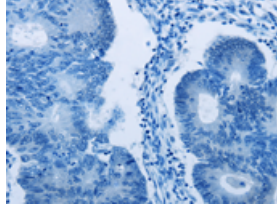
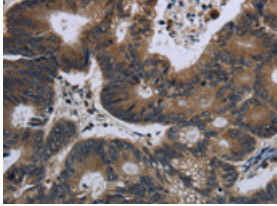
Applications

Immunohistochemistry

Predicted cell location: Cytoplasm

Positive control: Human colon cancer

Recommended dilution: 100-300

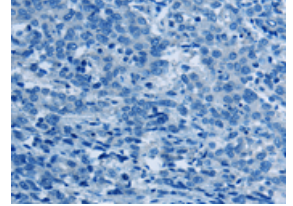
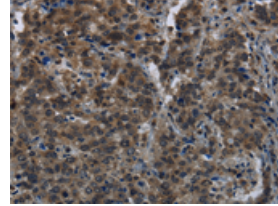


The image on the left is immunohistochemistry of paraffin-embedded Human colon cancer tissue using ml222429(GK Antibody) at dilution 1/60, on the right is treated with fusion protein. (Original magnification: ×200)

Predicted cell location: Cytoplasm

Positive control: Human liver cancer

Recommended dilution: 100-300



The image on the left is immunohistochemistry of paraffin-embedded Human liver cancer tissue using ml222429(GK Antibody) at dilution 1/60, on the right is treated with fusion protein. (Original magnification: ×200)

ELISA

Recommended dilution: 2000-10000

联系电话: 4008-898-798, 021-61725725

联系QQ: 2881505695, 2881505696

邮箱: mlbio_cn@yeah.net

网址: www.mlbio.cn