

Anti-SETD7 antibody

Cat. No.	ml222485
Package	25 µl/100 µl/200 µl
Storage	-20°C, pH7.4 PBS, 0.05% NaN ₃ , 40% Glycerol

Product overview

Description	Anti-SETD7 rabbit polyclonal antibody
Applications	ELISA, IHC
Immunogen	Fusion protein of human SETD7
Reactivity	Human, Mouse
Content	0.2 mg/ml
Host species	Rabbit
Ig class	Immunogen-specific rabbit IgG
Purification	Antigen affinity purification

Target information

Symbol	SETD7
Full name	SET domain containing (lysine methyltransferase) 7
Synonyms	KMT7; SET7; SET9; SET7/9
Swissprot	Q8WTS6

Target Background

The methylation of histones plays a pivotal role in the regulation of chromatin structure and gene expression. Histone methylation can occur on Arg or Lys residues, with an exquisite site selectivity for Lys methylation at specific positions in the N-termini of histones H3 and H4. SET7/9, a histone methyltransferase (HMTase), which transfers methyl groups to Lys4 of histone H3, forms a complex with S-adenosyl-L-methionine. This complex contains an active site consisting of a binding pocket where an AdoMet molecule in an unusual conformation binds, a narrow substrate-specific channel that only unmethylated lysine residues can access and a catalytic tyrosine residue.

订购热线: 4008-898-798

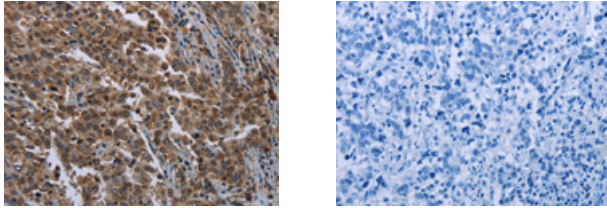
Applications

Immunohistochemistry

Predicted cell location: Nucleus and Cytoplasm

Positive control: Human liver cancer

Recommended dilution: 50-200



The image on the left is immunohistochemistry of paraffin-embedded Human liver cancer tissue using ml222485(SETD7 Antibody) at dilution 1/20, on the right is treated with fusion protein. (Original magnification: $\times 200$)

ELISA

Recommended dilution: 2000-5000

联系电话: 4008-898-798, 021-61725725

联系QQ: 2881505695, 2881505696

邮箱: mlbio_cn@yeah.net

网址: www.mlbio.cn