

Anti-MEI1 antibody

Cat. No.	ml222672
Package	25 µl/100 µl/200 µl
Storage	-20°C, pH7.4 PBS, 0.05% NaN ₃ , 40% Glycerol

Product overview

Description	Anti-MEI1 rabbit polyclonal antibody
Applications	ELISA, IHC
Immunogen	Fusion protein of human MEI1
Reactivity	Human
Content	0.2 mg/ml
Host species	Rabbit
Ig class	Immunogen-specific rabbit IgG
Purification	Antigen affinity purification

Target information

Symbol	MEI1
Full name	meiosis inhibitor 1
Synonyms	SPATA38
Swissprot	Q5TIA1

Target Background

The predominant cause of spermatogenic arrest of meiosis is the failure of homologous chromosomes to accurately synapse. MEI1 (Meiosis inhibitor protein 1), also designated Meiosis defective protein 1, is a 1274 amino acid protein that is likely required for the formation of genetically programmed double-strand breaks, the first step in the initiation of meiosis. With predominant expression in testis, it is likely that defects of the gene encoding MEI1 results in male infertility. Interestingly, studies show that genetic variation in the MEI gene possibly predisposes European Americans but not Israeli men to infertility by meiotic arrest. Human MEI1 shares 79% sequence similarity with its mouse homolog. There are seven isoforms of MEI1 that are produced as a result of alternative splicing events.

订购热线: 4008-898-798

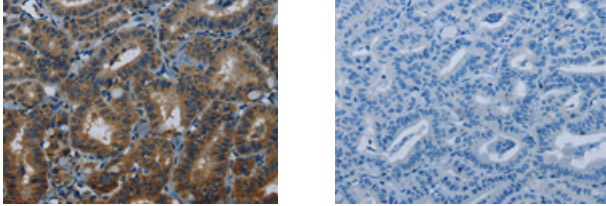
Applications

Immunohistochemistry

Predicted cell location: Cytoplasm

Positive control: Human thyroid cancer

Recommended dilution: 25-100



The image on the left is immunohistochemistry of paraffin-embedded Human thyroid cancer tissue using ml222672(ME1 Antibody) at dilution 1/20, on the right is treated with fusion protein. (Original magnification: $\times 200$)

ELISA

Recommended dilution: 1000-2000

联系电话: 4008-898-798, 021-61725725

联系QQ: 2881505695, 2881505696

邮箱: mlbio_cn@yeah.net

网址: www.mlbio.cn