

Anti-NDUFAF1 antibody

Cat. No.	ml222738
Package	25 µl/100 µl/200 µl
Storage	-20°C, pH7.4 PBS, 0.05% NaN ₃ , 40% Glycerol

Product overview

Description	Anti-NDUFAF1 rabbit polyclonal antibody
Applications	ELISA, IHC
Immunogen	Fusion protein of human NDUFAF1
Reactivity	Human, Mouse
Content	0.3 mg/ml
Host species	Rabbit
Ig class	Immunogen-specific rabbit IgG
Purification	Antigen affinity purification

Target information

Symbol	NDUFAF1
Full name	NADH dehydrogenase (ubiquinone) complex I, assembly factor 1
Synonyms	CGI65; CIA30; CGI-65
Swissprot	Q9Y375

Target Background

This gene encodes a complex I assembly factor protein. Complex I (NADH-ubiquinone oxidoreductase) catalyzes the transfer of electrons from NADH to ubiquinone (coenzyme Q) in the first step of the mitochondrial respiratory chain, resulting in the translocation of protons across the inner mitochondrial membrane. The encoded protein is required for assembly of complex I, and mutations in this gene are a cause of mitochondrial complex I deficiency. Alternatively spliced transcript variants have been observed for this gene, and a pseudogene of this gene is located on the long arm of chromosome 19.

订购热线: 4008-898-798

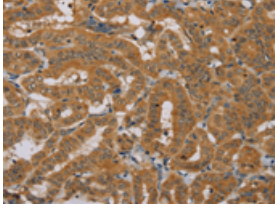
Applications

Immunohistochemistry

Predicted cell location: Cytoplasm

Positive control: Human thyroid cancer

Recommended dilution: 50-200

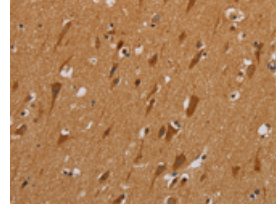


The image is immunohistochemistry of paraffin-embedded Human thyroid cancer tissue using ml222738(NDUFAF1 Antibody) at dilution 1/25. (Original magnification: ×200)

Predicted cell location: Cytoplasm

Positive control: Human brain

Recommended dilution: 50-200



The image is immunohistochemistry of paraffin-embedded Human brain tissue using ml222738(NDUFAF1 Antibody) at dilution 1/25. (Original magnification: ×200)

ELISA

Recommended dilution: 2000-5000

联系电话: 4008-898-798, 021-61725725

联系QQ: 2881505695, 2881505696

邮箱: mlbio_cn@yeah.net

网址: www.mlbio.cn