

## Anti-SCGB2A1 antibody

|                 |                                                         |
|-----------------|---------------------------------------------------------|
| <b>Cat. No.</b> | ml222845                                                |
| <b>Package</b>  | 25 µl/100 µl/200 µl                                     |
| <b>Storage</b>  | -20°C, pH7.4 PBS, 0.05% NaN <sub>3</sub> , 40% Glycerol |

### Product overview

|                     |                                         |
|---------------------|-----------------------------------------|
| <b>Description</b>  | Anti-SCGB2A1 rabbit polyclonal antibody |
| <b>Applications</b> | ELISA, IHC                              |
| <b>Immunogen</b>    | Fusion protein of human SCGB2A1         |
| <b>Reactivity</b>   | Human                                   |
| <b>Content</b>      | 0.2 mg/ml                               |
| <b>Host species</b> | Rabbit                                  |
| <b>Ig class</b>     | Immunogen-specific rabbit IgG           |
| <b>Purification</b> | Antigen affinity purification           |

### Target information

|                  |                                    |
|------------------|------------------------------------|
| <b>Symbol</b>    | SCGB2A1                            |
| <b>Full name</b> | secretoglobin, family 2A, member 1 |
| <b>Synonyms</b>  | LPHC; LPNC; MGB2; UGB3             |
| <b>Swissprot</b> | O75556                             |

### Target Background

Mammaglobin-B also known as secretoglobin family 2A member 1 is a protein that in humans is encoded by the SCGB2A1 gene. SCGB2A1 expression is highly specific of mammary tissue, and has been used for identification and detection of disseminated breast cancer cells. May bind androgens and other steroids, may also bind estramustine, a chemotherapeutic agent used for prostate cancer. May be under transcriptional regulation of steroid hormones.

订购热线: 4008-898-798

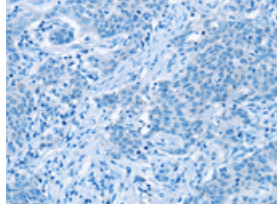
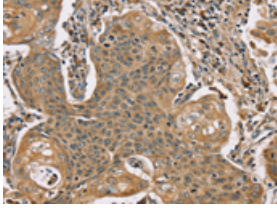
### Applications

#### Immunohistochemistry

Predicted cell location: Cytoplasm

Positive control: Human cervical cancer

Recommended dilution: 50-200

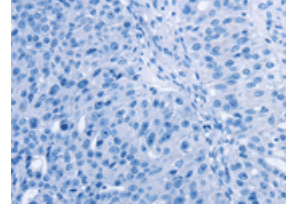
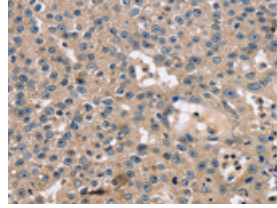


The image on the left is immunohistochemistry of paraffin-embedded Human cervical cancer tissue using ml222845(SCGB2A1 Antibody) at dilution 1/20, on the right is treated with fusion protein. (Original magnification: ×200)

Predicted cell location: Cytoplasm

Positive control: Human breast cancer

Recommended dilution: 50-200



The image on the left is immunohistochemistry of paraffin-embedded Human breast cancer tissue using ml222845(SCGB2A1 Antibody) at dilution 1/20, on the right is treated with fusion protein. (Original magnification: ×200)

#### ELISA

Recommended dilution: 2000-5000

联系电话: 4008-898-798, 021-61725725

联系QQ: 2881505695, 2881505696

邮箱: [mlbio\\_cn@yeah.net](mailto:mlbio_cn@yeah.net)

网址: [www.mlbio.cn](http://www.mlbio.cn)