

Anti-PDLIM7 antibody

Cat. No.	ml222857
Package	25 µl/100 µl/200 µl
Storage	-20°C, pH7.4 PBS, 0.05% NaN ₃ , 40% Glycerol

Product overview

Description	Anti-PDLIM7 rabbit polyclonal antibody
Applications	ELISA, IHC
Immunogen	Fusion protein of human PDLIM7
Reactivity	Human, Mouse, Rat
Content	0.2 mg/ml
Host species	Rabbit
Ig class	Immunogen-specific rabbit IgG
Purification	Antigen affinity purification

Target information

Symbol	PDLIM7
Full name	PDZ and LIM domain 7 (enigma)
Synonyms	LMP1; LMP3
Swissprot	Q9NR12

Target Background

The protein encoded by this gene is representative of a family of proteins composed of conserved PDZ and LIM domains. LIM domains are proposed to function in protein-protein recognition in a variety of contexts including gene transcription and development and in cytoskeletal interaction. The LIM domains of this protein bind to protein kinases, whereas the PDZ domain binds to actin filaments.

订购热线: 4008-898-798

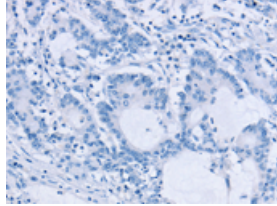
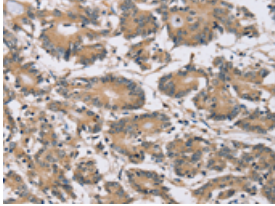
Applications

Immunohistochemistry

Predicted cell location: Cytoplasm

Positive control: Human colon cancer

Recommended dilution: 25-100

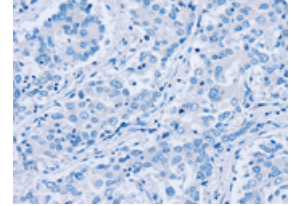
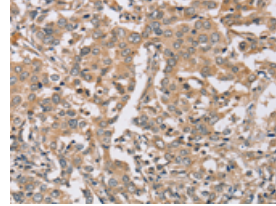


The image on the left is immunohistochemistry of paraffin-embedded Human colon cancer tissue using ml222857(PDLIM7 Antibody) at dilution 1/20, on the right is treated with fusion protein. (Original magnification: ×200)

Predicted cell location: Cytoplasm

Positive control: Human liver cancer

Recommended dilution: 25-100



The image on the left is immunohistochemistry of paraffin-embedded Human liver cancer tissue using ml222857(PDLIM7 Antibody) at dilution 1/20, on the right is treated with fusion protein. (Original magnification: ×200)

ELISA

Recommended dilution: 1000-2000

联系电话: 4008-898-798, 021-61725725

联系QQ: 2881505695, 2881505696

邮箱: mlbio_cn@yeah.net

网址: www.mlbio.cn