

## Anti-PLCZ1 antibody

<b>Cat. No.</b>	ml222887
<b>Package</b>	25 µl/100 µl/200 µl
<b>Storage</b>	-20°C, pH7.4 PBS, 0.05% NaN <sub>3</sub> , 40% Glycerol

### Product overview

<b>Description</b>	Anti-PLCZ1 rabbit polyclonal antibody
<b>Applications</b>	ELISA, IHC
<b>Immunogen</b>	Fusion protein of human PLCZ1
<b>Reactivity</b>	Human
<b>Content</b>	0.1 mg/ml
<b>Host species</b>	Rabbit
<b>Ig class</b>	Immunogen-specific rabbit IgG
<b>Purification</b>	Antigen affinity purification

### Target information

<b>Symbol</b>	PLCZ1
<b>Full name</b>	phospholipase C, zeta 1
<b>Synonyms</b>	PLCzeta; NYD-SP27; PLC-zeta-1
<b>Swissprot</b>	Q86YW0

### Target Background

The protein encoded by this gene is a member of the phosphoinositide-specific phospholipase C family. Members in this family, classified into six isotypes that are tissue- and organ-specific, hydrolyze phosphatidylinositol 4,5-bisphosphate just before the phosphate group to yield diacylglycerol and inositol 1,4,5-trisphosphate. This protein localizes to the acrosome in spermatozoa and elicits Ca<sup>2+</sup> oscillations and egg activation during fertilization that leads to early embryonic development. Alternative splicing results in multiple transcript variants.

订购热线: 4008-898-798

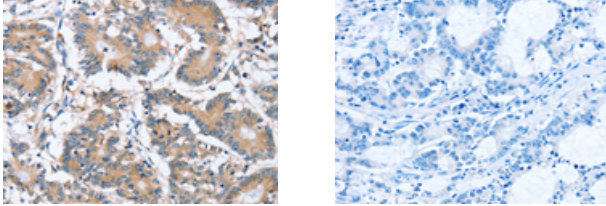
#### Applications

##### Immunohistochemistry

Predicted cell location: Cytoplasm

Positive control: Human colon cancer

Recommended dilution: 25-100



The image on the left is immunohistochemistry of paraffin-embedded Human colon cancer tissue using ml222887(PLCZ1 Antibody) at dilution 1/20, on the right is treated with fusion protein. (Original magnification: ×200)

##### ELISA

Recommended dilution: 1000-2000

联系电话: 4008-898-798, 021-61725725

联系QQ: 2881505695, 2881505696

邮箱: [mlbio\\_cn@yeah.net](mailto:mlbio_cn@yeah.net)

网址: [www.mlbio.cn](http://www.mlbio.cn)