

Anti-RDH11 antibody

Cat. No.	ml222996
Package	25 µl/100 µl/200 µl
Storage	-20°C, pH7.4 PBS, 0.05% NaN ₃ , 40% Glycerol

Product overview

Description	Anti-RDH11 rabbit polyclonal antibody
Applications	ELISA, IHC
Immunogen	Fusion protein of human RDH11
Reactivity	Human, Mouse
Content	0.1 mg/ml
Host species	Rabbit
Ig class	Immunogen-specific rabbit IgG
Purification	Antigen affinity purification

Target information

Symbol	RDH11
Full name	retinol dehydrogenase 11 (all-trans/9-cis/11-cis)
Synonyms	MDT1; CGI82; PSDR1; RALR1; SCALD; ARSDR1; HCBP12; SDR7C1
Swissprot	Q8TC12

Target Background

The protein encoded by this gene is an NADPH-dependent retinal reductase and a short-chain dehydrogenase/reductase. The encoded protein has no steroid dehydrogenase activity.

订购热线: 4008-898-798

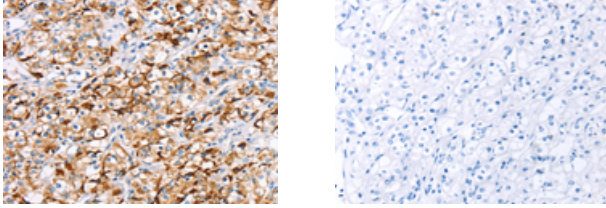
Applications

Immunohistochemistry

Predicted cell location: Cytoplasm

Positive control: Human prostate cancer

Recommended dilution: 10-50



The image on the left is immunohistochemistry of paraffin-embedded Human prostate cancer tissue using ml222996(RDH11 Antibody) at dilution 1/20, on the right is treated with fusion protein. (Original magnification: ×200)

ELISA

Recommended dilution: 1000-2000

联系电话: 4008-898-798, 021-61725725

联系QQ: 2881505695, 2881505696

邮箱: mlbio_cn@yeah.net

网址: www.mlbio.cn