

## Anti-RERG antibody

<b>Cat. No.</b>	ml223003
<b>Package</b>	25 µl/100 µl/200 µl
<b>Storage</b>	-20°C, pH7.4 PBS, 0.05% NaN <sub>3</sub> , 40% Glycerol

### Product overview

<b>Description</b>	Anti-RERG rabbit polyclonal antibody
<b>Applications</b>	ELISA, IHC
<b>Immunogen</b>	Full length fusion protein
<b>Reactivity</b>	Human, Mouse
<b>Content</b>	0.9 mg/ml
<b>Host species</b>	Rabbit
<b>Ig class</b>	Immunogen-specific rabbit IgG
<b>Purification</b>	Antigen affinity purification

### Target information

<b>Symbol</b>	RERG
<b>Full name</b>	RAS-like, estrogen-regulated, growth inhibitor
<b>Synonyms</b>	
<b>Swissprot</b>	Q96A58

### Target Background

RERG, a member of the RAS superfamily of GTPases, inhibits cell proliferation and tumor formation (Finlin et al., 2001 [PubMed 11533059]).

订购热线: 4008-898-798

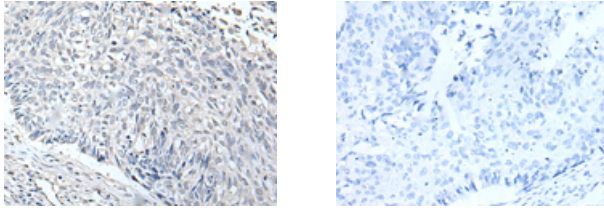
#### Applications

##### Immunohistochemistry

Predicted cell location: Cytoplasm

Positive control: Human lung cancer

Recommended dilution: 50-350



The image on the left is immunohistochemistry of paraffin-embedded Human lung cancer tissue using ml223003(RERG Antibody) at dilution 1/65, on the right is treated with fusion protein. (Original magnification:  $\times 200$ )

##### ELISA

Recommended dilution: 5000-10000

联系电话: 4008-898-798, 021-61725725

联系QQ: 2881505695, 2881505696

邮箱: [mlbio\\_cn@yeah.net](mailto:mlbio_cn@yeah.net)

网址: [www.mlbio.cn](http://www.mlbio.cn)