

Anti-RNASET2 antibody

Cat. No.	ml223023
Package	25 µl/100 µl/200 µl
Storage	-20°C, pH7.4 PBS, 0.05% NaN ₃ , 40% Glycerol

Product overview

Description	Anti-RNASET2 rabbit polyclonal antibody
Applications	ELISA, IHC
Immunogen	Fusion protein of human RNASET2
Reactivity	Human
Content	0.4 mg/ml
Host species	Rabbit
Ig class	Immunogen-specific rabbit IgG
Purification	Antigen affinity purification

Target information

Symbol	RNASET2
Full name	ribonuclease T2
Synonyms	RNASE6PL; bA514O12.3
Swissprot	O00584

Target Background

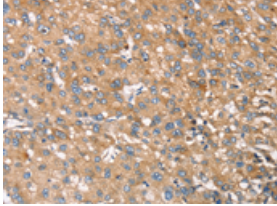
This ribonuclease gene is a novel member of the Rh/T2/S-glycoprotein class of extracellular ribonucleases. It is a single copy gene that maps to 6q27, a region associated with human malignancies and chromosomal rearrangement.

订购热线: 4008-898-798

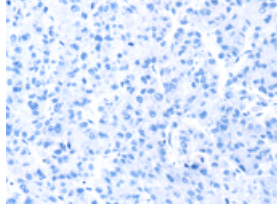
Applications

Immunohistochemistry

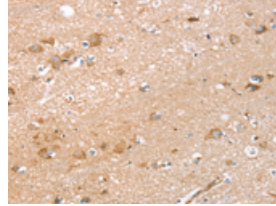
Predicted cell location: Cytoplasm
Positive control: Human liver cancer
Recommended dilution: 25-100



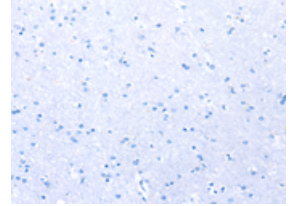
The image on the left is immunohistochemistry of paraffin-embedded Human liver cancer tissue using ml223023(RNASET2 Antibody) at dilution 1/30, on the right is treated with fusion protein. (Original magnification: ×200)



Predicted cell location: Cytoplasm
Positive control: Human brain
Recommended dilution: 25-100



The image on the left is immunohistochemistry of paraffin-embedded Human brain tissue using ml223023(RNASET2 Antibody) at dilution 1/30, on the right is treated with fusion protein. (Original magnification: ×200)



ELISA

Recommended dilution: 2000-5000

联系电话: 4008-898-798, 021-61725725

联系QQ: 2881505695, 2881505696

邮箱: mlbio_cn@yeah.net

网址: www.mlbio.cn