

Anti-SCPEP1 antibody

Cat. No.	ml223033
Package	25 µl/100 µl/200 µl
Storage	-20°C, pH7.4 PBS, 0.05% NaN ₃ , 40% Glycerol

Product overview

Description	Anti-SCPEP1 rabbit polyclonal antibody
Applications	ELISA, IHC
Immunogen	Fusion protein of human SCPEP1
Reactivity	Human, Mouse, Rat
Content	0.2 mg/ml
Host species	Rabbit
Ig class	Immunogen-specific rabbit IgG
Purification	Antigen affinity purification

Target information

Symbol	SCPEP1
Full name	serine carboxypeptidase 1
Synonyms	RISC; HSCP1
Swissprot	Q9HB40

Target Background

Retinoid-inducible serine carboxypeptidase is an enzyme that in humans is encoded by the SCPEP1 gene. May be involved in vascular wall and kidney homeostasis.

订购热线: 4008-898-798

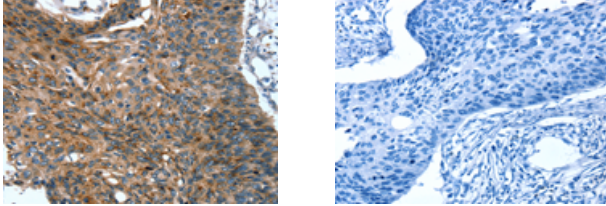
Applications

Immunohistochemistry

Predicted cell location: Cytoplasm

Positive control: Human esophagus cancer

Recommended dilution: 20-100



The image on the left is immunohistochemistry of paraffin-embedded Human esophagus cancer tissue using ml223033(SCPEP1 Antibody) at dilution 1/20, on the right is treated with fusion protein. (Original magnification: ×200)

ELISA

Recommended dilution: 2000-5000

联系电话: 4008-898-798, 021-61725725

联系QQ: 2881505695, 2881505696

邮箱: mlbio_cn@yeah.net

网址: www.mlbio.cn