

## Anti-ROBO4 antibody

<b>Cat. No.</b>	ml223052
<b>Package</b>	25 µl/100 µl/200 µl
<b>Storage</b>	-20°C, pH7.4 PBS, 0.05% NaN <sub>3</sub> , 40% Glycerol

### Product overview

<b>Description</b>	Anti-ROBO4 rabbit polyclonal antibody
<b>Applications</b>	ELISA, IHC
<b>Immunogen</b>	Fusion protein of human ROBO4
<b>Reactivity</b>	Human
<b>Content</b>	0.3 mg/ml
<b>Host species</b>	Rabbit
<b>Ig class</b>	Immunogen-specific rabbit IgG
<b>Purification</b>	Antigen affinity purification

### Target information

<b>Symbol</b>	ROBO4
<b>Full name</b>	roundabout, axon guidance receptor, homolog 4 (Drosophila)
<b>Synonyms</b>	MRB; ECSM4
<b>Swissprot</b>	Q8WZ75

### Target Background

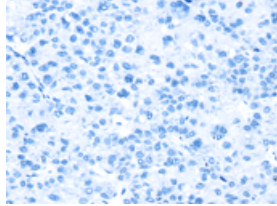
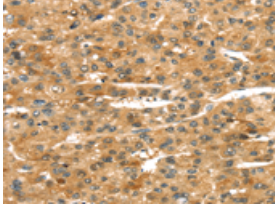
Robo4 (roundabout homolog 4 or magic roundabout) is a receptor for Slit proteins which implicate in angiogenesis and vascular patterning especially through facilitating inhibition of primary endothelial cell migration. It is a fairly recently identified member of Robo family and is shorter than other Robo members at both intracellular as well as extracellular domains. Robo4 plays important roles in several aspects of vascular development such as the guidance of endothelial cell migration, cell cycle regulation, inhibition of pathologic angiogenesis and endothelial hyperpermeability etc. Employing mouse and zebrafish models, Slit2/Robo4 interactions have been shown to maintain integrity of vascular network and its barrier function by inhibiting cytokine-mediated vasculogenesis with enhanced permeability, and that Slit2-Robo4-paxillin-GIT1 network inhibits neovascularization and vascular leakage. Moreover, single nucleotide polymorphism of Robo4 has been documented to be associated with autism suggesting its role in development and function of human brain.

订购热线: 4008-898-798

### Applications

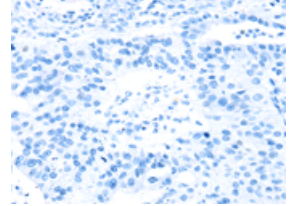
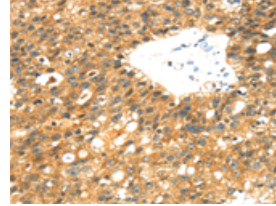
#### Immunohistochemistry

Predicted cell location: Cytoplasm  
Positive control: Human liver cancer  
Recommended dilution: 25-100



The image on the left is immunohistochemistry of paraffin-embedded Human liver cancer tissue using ml223052(ROBO4 Antibody) at dilution 1/25, on the right is treated with fusion protein. (Original magnification: ×200)

Predicted cell location: Cytoplasm  
Positive control: Human breast cancer  
Recommended dilution: 25-100



The image on the left is immunohistochemistry of paraffin-embedded Human breast cancer tissue using ml223052(ROBO4 Antibody) at dilution 1/25, on the right is treated with fusion protein. (Original magnification: ×200)

#### ELISA

Recommended dilution: 2000-5000

联系电话: 4008-898-798, 021-61725725

联系QQ: 2881505695, 2881505696

邮箱: [mlbio\\_cn@yeah.net](mailto:mlbio_cn@yeah.net)

网址: [www.mlbio.cn](http://www.mlbio.cn)