

## Anti-POMC(Alpha-MSH) antibody

<b>Cat. No.</b>	ml160635
<b>Package</b>	25 µl/100 µl/200 µl
<b>Storage</b>	-20°C, pH7.4 PBS, 0.05% NaN <sub>3</sub> , 40% Glycerol

### Product overview

<b>Description</b>	Anti-POMC(Alpha-MSH) rabbit polyclonal antibody
<b>Applications</b>	ELISA, WB
<b>Immunogen</b>	Synthetic peptide of human POMC
<b>Reactivity</b>	Human, Mouse, Rat
<b>Content</b>	0.2 mg/ml
<b>Host species</b>	Rabbit
<b>Ig class</b>	Immunogen-specific rabbit IgG
<b>Purification</b>	Antigen affinity purification

### Target information

<b>Symbol</b>	POMC
<b>Full name</b>	proopiomelanocortin
<b>Synonyms</b>	LPH, MSH, NPP, POC, ACTH, CLIP
<b>Swissprot</b>	P01189

### Target Background

This gene encodes a polypeptide hormone precursor that undergoes extensive, tissue-specific, post-translational processing via cleavage by subtilisin-like enzymes known as prohormone convertases. There are eight potential cleavage sites within the polypeptide precursor and, depending on tissue type and the available convertases, processing may yield as many as ten biologically active peptides involved in diverse cellular functions. The encoded protein is synthesized mainly in corticotroph cells of the anterior pituitary where four cleavage sites are used; adrenocorticotrophin, essential for normal steroidogenesis and the maintenance of normal adrenal weight, and lipotropin beta are the major end products. In other tissues, including the hypothalamus, placenta, and epithelium, all cleavage sites may be used, giving rise to peptides with roles in pain and energy homeostasis, melanocyte stimulation, and immune modulation.

订购热线: 4008-898-798

**Applications**

**Western blotting**

Predicted band size: 29 kDa

Positive control: Human fetal brain tissue

Recommended dilution: 500-2000

Gel: 10% SDS-PAGE

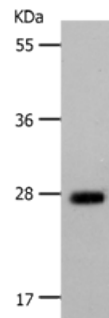
Lysate: 40 µg

Lane: Human fetal brain tissue

Primary antibody: ml160635 (POMC (Alpha-MSH) Antibody)  
at dilution 1/350

Secondary antibody: Goat anti rabbit IgG at 1/8000 dilution

Exposure time: 2 minutes



**ELISA**

Recommended dilution: 2000-5000

联系电话: 4008-898-798, 021-61725725

联系QQ: 2881505695, 2881505696

邮箱: mlbio\_cn@yeah.net

网址: www.mlbio.cn