

## Anti-ZFP36 antibody

|                 |   |
|-----------------|---|
| <b>Cat. No.</b> | ml123985  |
| <b>Package</b>  | 25 µl/100 µl/200 µl                                     |
| <b>Storage</b>  | -20°C, pH7.4 PBS, 0.05% NaN <sub>3</sub> , 40% Glycerol |

### Product overview

|                     |                                       |
|---------------------|---------------------------------------|
| <b>Description</b>  | Anti-ZFP36 rabbit polyclonal antibody |
| <b>Applications</b> | ELISA, IHC                            |
| <b>Immunogen</b>    | Fusion protein of human ZFP36         |
| <b>Reactivity</b>   | Human, Mouse, Rat                     |
| <b>Content</b>      | 0.8 mg/ml                             |
| <b>Host species</b> | Rabbit                                |
| <b>Ig class</b>     | Immunogen-specific rabbit IgG         |
| <b>Purification</b> | Antigen affinity purification         |

### Target information

|                  |   |
|------------------|---|
| <b>Symbol</b>    | ZFP36   |
| <b>Full name</b> | ZFP36 ring finger protein                         |
| <b>Synonyms</b>  | TTP; G0S24; GOS24; TIS11; NUP475; zfp-36; RNF162A |
| <b>Swissprot</b> | P26651  |

### Target Background

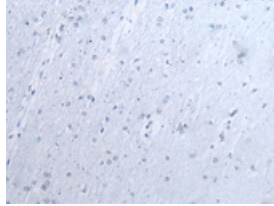
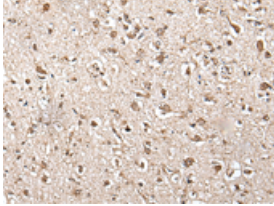
mRNA-binding protein involved in post-transcriptional regulation of AU-rich element (ARE)-containing mRNAs. Acts by specifically binding ARE-containing mRNAs and promoting their degradation. Recruits deadenylase CNOT7 (and probably the CCR4-NOT complex) via association with CNOT1. Plays a key role in the post-transcriptional regulation of tumor necrosis factor (TNF). Plays a key role in the post-transcriptional regulation of tumor necrosis factor (TNF).

订购热线: 4008-898-798

### Applications

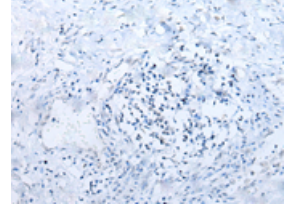
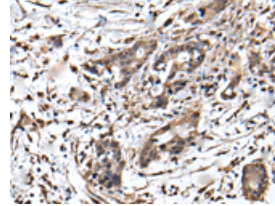
#### Immunohistochemistry

Predicted cell location: Nucleus  
Positive control: Human brain  
Recommended dilution: 40-200



The image on the left is immunohistochemistry of paraffin-embedded Human brain tissue using ml123985(ZFP36 Antibody) at dilution 1/55, on the right is treated with fusion protein. (Original magnification: ×200)

Predicted cell location: Nucleus  
Positive control: Human gastric cancer  
Recommended dilution: 40-200



The image on the left is immunohistochemistry of paraffin-embedded Human gastric cancer tissue using ml123985(ZFP36 Antibody) at dilution 1/55, on the right is treated with fusion protein. (Original magnification: ×200)

#### ELISA

Recommended dilution: 5000-10000

联系电话: 4008-898-798, 021-61725725

联系QQ: 2881505695, 2881505696

邮箱: [mlbio\\_cn@yeah.net](mailto:mlbio_cn@yeah.net)

网址: [www.mlbio.cn](http://www.mlbio.cn)