

## Anti-ZNF277 antibody

<b>Cat. No.</b>	ml124016
<b>Package</b>	25 µl/100 µl/200 µl
<b>Storage</b>	-20°C, pH7.4 PBS, 0.05% NaN <sub>3</sub> , 40% Glycerol

### Product overview

<b>Description</b>	Anti-ZNF277 rabbit polyclonal antibody
<b>Applications</b>	ELISA, IHC
<b>Immunogen</b>	Fusion protein of human ZNF277
<b>Reactivity</b>	Human
<b>Content</b>	0.4 mg/ml
<b>Host species</b>	Rabbit
<b>Ig class</b>	Immunogen-specific rabbit IgG
<b>Purification</b>	Antigen affinity purification

### Target information

<b>Symbol</b>	ZNF277
<b>Full name</b>	zinc finger protein 277
<b>Synonyms</b>	NRIF4; ZNF277P
<b>Swissprot</b>	Q9NRM2

### Target Background

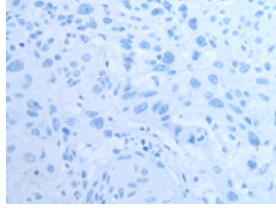
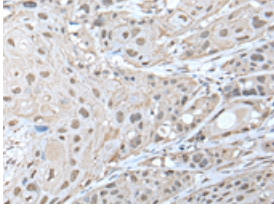
ZNF277 (zinc finger protein 277), also known as NRIF4 or ZNF277P, is a 438 amino acid protein that contains two C2H2-type zinc fingers and is thought to localize to the nucleus. Expressed in fetal liver, lymph node, spleen and peripheral blood leukocytes, ZNF277 may function as a transcriptional repressor that plays a role in cell growth and differentiation.

订购热线: 4008-898-798

### Applications

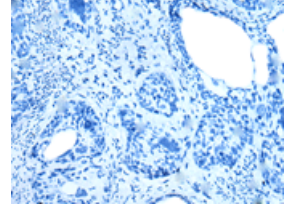
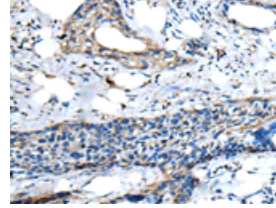
#### Immunohistochemistry

Predicted cell location: Nucleus or Cytoplasm  
Positive control: Human esophagus cancer  
Recommended dilution: 25-100



The image on the left is immunohistochemistry of paraffin-embedded Human esophagus cancer tissue using ml124016(ZNF277 Antibody) at dilution 1/30, on the right is treated with fusion protein. (Original magnification: ×200)

Predicted cell location: Nucleus or Cytoplasm  
Positive control: Human cervical cancer  
Recommended dilution: 25-100



The image on the left is immunohistochemistry of paraffin-embedded Human cervical cancer tissue using ml124016(ZNF277 Antibody) at dilution 1/30, on the right is treated with fusion protein. (Original magnification: ×200)

#### ELISA

Recommended dilution: 5000-10000

联系电话: 4008-898-798, 021-61725725

联系QQ: 2881505695, 2881505696

邮箱: [mlbio\\_cn@yeah.net](mailto:mlbio_cn@yeah.net)

网址: [www.mlbio.cn](http://www.mlbio.cn)