

Anti-ZUFSP antibody

| | |
|-----------------|---|
| Cat. No. | ml124052 |
| Package | 25 µl/100 µl/200 µl |
| Storage | -20°C, pH7.4 PBS, 0.05% NaN ₃ , 40% Glycerol |

Product overview

| | |
|---------------------|---------------------------------------|
| Description | Anti-ZUFSP rabbit polyclonal antibody |
| Applications | ELISA, IHC |
| Immunogen | Fusion protein of human ZUFSP |
| Reactivity | Human, Mouse, Rat |
| Content | 0.5 mg/ml |
| Host species | Rabbit |
| Ig class | Immunogen-specific rabbit IgG |
| Purification | Antigen affinity purification |

Target information

| | |
|------------------|---|
| Symbol | ZUFSP |
| Full name | zinc finger with UFM1-specific peptidase domain |
| Synonyms | C6orf113; dJ412I7.3 |
| Swissprot | Q96AP4 |

Target Background

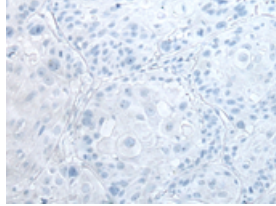
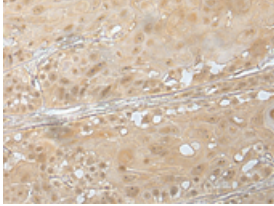
Making up nearly 6% of the human genome, chromosome 6 contains around 1,200 genes within 170 million base pairs of sequence. Deletion of a portion of the q arm of chromosome 6 is associated with early onset intestinal cancer suggesting the presence of a cancer susceptibility locus. Porphyrria cutanea tarda is associated with chromosome 6 through the HFE gene which, when mutated, predisposes an individual to developing this porphyria. Notably, the PARK2 gene, which is associated with Parkinson's disease, and the genes encoding the major histocompatibility complex proteins, which are key molecular components of the immune system and determine predisposition to rheumatic diseases, are also located on chromosome 6. Stickler syndrome, 21-hydroxylase deficiency and maple syrup urine disease are also associated with genes on chromosome 6. A bipolar disorder susceptibility locus has been identified on the q arm of chromosome 6.

订购热线: 4008-898-798

Applications

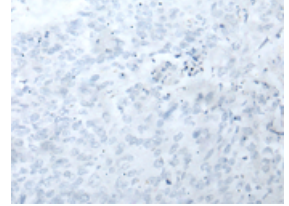
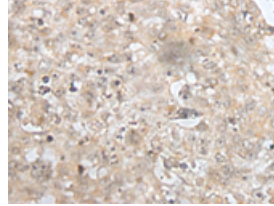
Immunohistochemistry

Predicted cell location: Nucleus and Cytoplasm
Positive control: Human esophagus cancer
Recommended dilution: 25-100



The image on the left is immunohistochemistry of paraffin-embedded Human esophagus cancer tissue using ml124052(ZUFSP Antibody) at dilution 1/30, on the right is treated with fusion protein. (Original magnification: ×200)

Predicted cell location: Nucleus and Cytoplasm
Positive control: Human lung cancer
Recommended dilution: 25-100



The image on the left is immunohistochemistry of paraffin-embedded Human lung cancer tissue using ml124052(ZUFSP Antibody) at dilution 1/30, on the right is treated with fusion protein. (Original magnification: ×200)

ELISA

Recommended dilution: 5000-10000

联系电话: 4008-898-798, 021-61725725

联系QQ: 2881505695, 2881505696

邮箱: mlbio_cn@yeah.net

网址: www.mlbio.cn