

Anti-ZZZ3 antibody

Cat. No.	ml124054
Package	25 µl/100 µl/200 µl
Storage	-20°C, pH7.4 PBS, 0.05% NaN ₃ , 40% Glycerol

Product overview

Description	Anti-ZZZ3 rabbit polyclonal antibody
Applications	ELISA, IHC
Immunogen	Fusion protein of human ZZZ3
Reactivity	Human, Mouse
Content	0.5 mg/ml
Host species	Rabbit
Ig class	Immunogen-specific rabbit IgG
Purification	Antigen affinity purification

Target information

Symbol	ZZZ3
Full name	zinc finger, ZZ-type containing 3
Synonyms	ATAC1
Swissprot	Q8IYH5

Target Background

ZZZ3 (ZZ-type zinc finger-containing protein 3) is a 903 amino acid protein that contains one HTH myb-type DNA-binding domain and one ZZ-type zinc finger. Phosphorylated upon DNA damage by ATM or ATR, ZZZ3 is a subunit of the ATAC complex, which is composed of GCN5, CRP2BP, ADA3, TADA2L, DR1, CCDC101, YEATS2, WDR5 and MBIP. The ATAC complex has histone acetyltransferase activity on histones H3 and H4. ZZZ3 is expressed as four isoforms produced by alternative splicing and is encoded by a gene mapping to human chromosome 1. Chromosome 1 is the largest human chromosome spanning about 260 million base pairs and making up 8% of the human genome. There are about 3,000 genes on chromosome 1, and considering the great number of genes there are also a large number of diseases associated with chromosome 1. Notably, the rare aging disease Hutchinson-Gilford progeria is associated with the LMNA gene which encodes lamin A. When defective, the LMNA gene product can build up in the nucleus and cause characteristic nuclear blebs. The mechanism of rapidly enhanced aging is unclear and is a topic of continuing exploration. Stickler syndrome, Parkinsons, Gaucher disease and Usher syndrome are also associated with chromosome 1.

订购热线: 4008-898-798

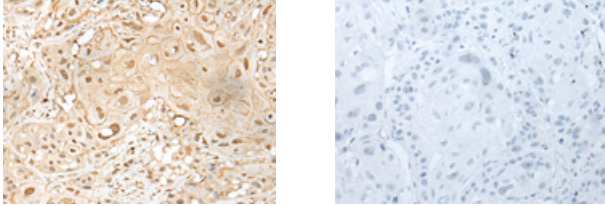
Applications

Immunohistochemistry

Predicted cell location: Nucleus

Positive control: Human esophagus cancer

Recommended dilution: 25-100



The image on the left is immunohistochemistry of paraffin-embedded Human esophagus cancer tissue using ml124054(ZZZ3 Antibody) at dilution 1/30, on the right is treated with fusion protein. (Original magnification: $\times 200$)

ELISA

Recommended dilution: 5000-10000

联系电话: 4008-898-798, 021-61725725

联系QQ: 2881505695, 2881505696

邮箱: mlbio_cn@yeah.net

网址: www.mlbio.cn