

Anti-UBE2E2 antibody

Cat. No.	ml124147
Package	25 µl/100 µl/200 µl
Storage	-20°C, pH7.4 PBS, 0.05% NaN ₃ , 40% Glycerol

Product overview

Description	Anti-UBE2E2 rabbit polyclonal antibody
Applications	ELISA, IHC
Immunogen	Full length fusion protein
Reactivity	Human, Mouse
Content	0.3 mg/ml
Host species	Rabbit
Ig class	Immunogen-specific rabbit IgG
Purification	Antigen affinity purification

Target information

Symbol	UBE2E2
Full name	ubiquitin conjugating enzyme E2E 2
Synonyms	UBCH8
Swissprot	Q96LR5

Target Background

Ubiquitination is an important mechanism through which three classes of enzymes act in concert to target short-lived or abnormal proteins for destruction. The three classes of enzymes involved in ubiquitination are the ubiquitin-activating enzymes (E1s), the ubiquitin-conjugating enzymes (E2s) and the ubiquitin-protein ligases (E3s). The first step in the ubiquitination process requires the ATP-dependent activation of the ubiquitin C-terminus and the assembly of multi-ubiquitin chains by the E1 enzyme. The ubiquitin chain is then conjugated to the E2 enzyme to generate an intermediate ubiquitin-E2 complex. The E3 enzyme then catalyzes the transfer of ubiquitin from E2 to the appropriate protein substrate, thereby targeting that substrate for degradation. A wide range of enzymes facilitate this proteolytic ubiquitin pathway, one of which is UBE2E2 (also known as UBCH8 in human), which functions as an E2 enzyme and catalyzes the ATP-dependent covalent attachment of ubiquitin to target proteins, thereby playing an important role in protein degradation.

订购热线: 4008-898-798

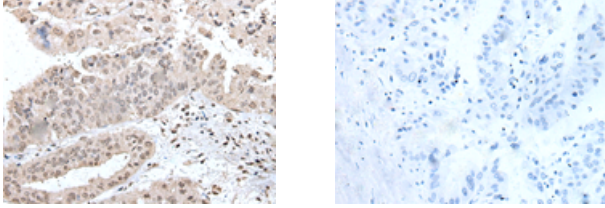
Applications

Immunohistochemistry

Predicted cell location: Cytoplasm and Nucleus

Positive control: Human liver cancer

Recommended dilution: 25-100



The image on the left is immunohistochemistry of paraffin-embedded Human liver cancer tissue using ml124147(UBE2E2 Antibody) at dilution 1/30, on the right is treated with fusion protein. (Original magnification: $\times 200$)

ELISA

Recommended dilution: 5000-10000

联系电话: 4008-898-798, 021-61725725

联系QQ: 2881505695, 2881505696

邮箱: mlbio_cn@yeah.net

网址: www.mlbio.cn