

Anti-USP12 antibody

Cat. No.	ml124182
Package	25 µl/100 µl/200 µl
Storage	-20°C, pH7.4 PBS, 0.05% NaN ₃ , 40% Glycerol

Product overview

Description	Anti-USP12 rabbit polyclonal antibody
Applications	ELISA, IHC
Immunogen	Full length fusion protein
Reactivity	Human, Mouse
Content	0.5 mg/ml
Host species	Rabbit
Ig class	Immunogen-specific rabbit IgG
Purification	Antigen affinity purification

Target information

Symbol	USP12
Full name	ubiquitin specific peptidase 12
Synonyms	UBH1; USP12L1
Swissprot	O75317

Target Background

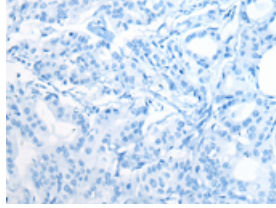
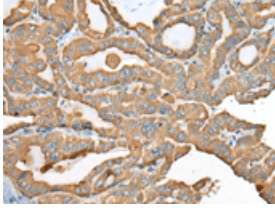
The ubiquitin (Ub) pathway involves three sequential enzymatic steps that facilitate the conjugation of Ub and Ub-like molecules to specific protein substrates. Through the use of a wide range of enzymes that can add or remove ubiquitin, the Ub pathway controls many intracellular processes such as signal transduction, transcriptional activation and cell cycle progression. USP12 (ubiquitin specific peptidase 12), also known as UBH1 or USP12L1, is a 370 amino acid protein belonging to the peptidase C19 family and the USP12/USP46 subfamily. Considered a deubiquitinating enzyme, it is suggested that USP12 has almost no deubiquitinating activity by itself and requires the interaction with WDR48 to have high activity. The gene encoding USP12 maps to human chromosome 13, which houses over 400 genes, such as BRCA2 and RB1, and comprises nearly 4% of the human genome.

订购热线: 4008-898-798

Applications

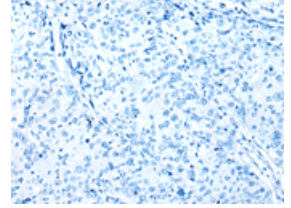
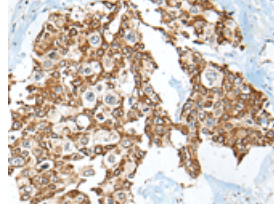
Immunohistochemistry

Predicted cell location: Cytoplasm and Cell membrane
Positive control: Human thyroid cancer
Recommended dilution: 30-150



The image on the left is immunohistochemistry of paraffin-embedded Human thyroid cancer tissue using ml124182(USP12 Antibody) at dilution 1/35, on the right is treated with fusion protein. (Original magnification: ×200)

Predicted cell location: Cytoplasm and Cell membrane
Positive control: Human prostate cancer
Recommended dilution: 30-150



The image on the left is immunohistochemistry of paraffin-embedded Human prostate cancer tissue using ml124182(USP12 Antibody) at dilution 1/35, on the right is treated with fusion protein. (Original magnification: ×200)

ELISA

Recommended dilution: 5000-10000

联系电话: 4008-898-798, 021-61725725

联系QQ: 2881505695, 2881505696

邮箱: mlbio_cn@yeah.net

网址: www.mlbio.cn