

Anti-GPANK1 antibody

Cat. No.	ml124231
Package	25 µl/100 µl/200 µl
Storage	-20°C, pH7.4 PBS, 0.05% NaN ₃ , 40% Glycerol

Product overview

Description	Anti-GPANK1 rabbit polyclonal antibody
Applications	ELISA, IHC
Immunogen	Fusion protein of human GPANK1
Reactivity	Human, Mouse
Content	0.4 mg/ml
Host species	Rabbit
Ig class	Immunogen-specific rabbit IgG
Purification	Antigen affinity purification

Target information

Symbol	GPANK1
Full name	G-patch domain and ankyrin repeats 1
Synonyms	G5; BAT4; D6S54E; ANKRD59; GPATCH10
Swissprot	O95872

Target Background

This gene is located in a cluster of HLA-B-associated transcripts, which is included in the human major histocompatibility complex III region. This gene encodes a protein which is thought to play a role in immunity. Multiple alternatively spliced variants, encoding the same protein, have been identified.

订购热线: 4008-898-798

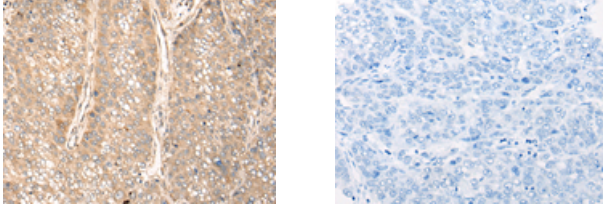
Applications

Immunohistochemistry

Predicted cell location: Cytoplasm

Positive control: Human liver cancer

Recommended dilution: 25-100



The image on the left is immunohistochemistry of paraffin-embedded Human liver cancer tissue using ml124231(GPANK1 Antibody) at dilution 1/30, on the right is treated with fusion protein. (Original magnification: ×200)

ELISA

Recommended dilution: 5000-10000

联系电话: 4008-898-798, 021-61725725

联系QQ: 2881505695, 2881505696

邮箱: mlbio_cn@yeah.net

网址: www.mlbio.cn