

## Anti-BBX antibody

|                 |   |
|-----------------|---|
| <b>Cat. No.</b> | ml124238  |
| <b>Package</b>  | 25 µl/100 µl/200 µl                                     |
| <b>Storage</b>  | -20°C, pH7.4 PBS, 0.05% NaN <sub>3</sub> , 40% Glycerol |

### Product overview

|                     |                                     |
|---------------------|-------------------------------------|
| <b>Description</b>  | Anti-BBX rabbit polyclonal antibody |
| <b>Applications</b> | ELISA, IHC                          |
| <b>Immunogen</b>    | Fusion protein of human BBX         |
| <b>Reactivity</b>   | Human                               |
| <b>Content</b>      | 0.5 mg/ml                           |
| <b>Host species</b> | Rabbit                              |
| <b>Ig class</b>     | Immunogen-specific rabbit IgG       |
| <b>Purification</b> | Antigen affinity purification       |

### Target information

|                  |                                |
|------------------|--------------------------------|
| <b>Symbol</b>    | BBX                            |
| <b>Full name</b> | bobby sox homolog (Drosophila) |
| <b>Synonyms</b>  | HBP2; ARTC1; MDS001; HSPC339   |
| <b>Swissprot</b> | Q8WY36                         |

### Target Background

BBX (HMG box transcription factor BBX, Bobby sox homolog, HMG box-containing protein 2) is a 941 amino acid protein encoded by the human gene BBX. BBX is a nuclear protein that contains one high mobility group (HMG) domain that belongs to the Sox (Sry-related HMG box) family of transcription factors. HMG proteins are thought to play a significant role in various human disorders. Disruptions and rearrangements in the genes coding for some of the HMG proteins are associated with common benign tumors. Commonly, antibodies against HMG proteins are found in patients suffering from autoimmune diseases. The SRY gene on the Y Chromosome, responsible for male sexual differentiation, contains a HMG-Box domain. Some HMG proteins have demonstrated extracellular activity as a chemokine, attracting neutrophils and mononuclear inflammatory cells to the infected sites. BBX functions as a transcription factor that is necessary for cell cycle progression from G1 to S phase.

订购热线: 4008-898-798

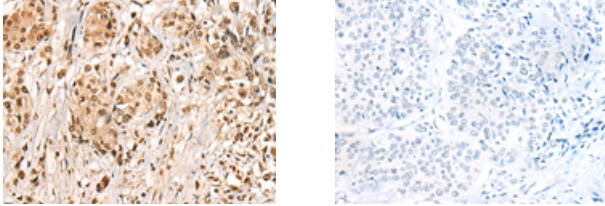
#### Applications

##### Immunohistochemistry

Predicted cell location: Nucleus

Positive control: Human prostate cancer

Recommended dilution: 20-100



The image on the left is immunohistochemistry of paraffin-embedded Human prostate cancer tissue using ml124238(BBX Antibody) at dilution 1/30, on the right is treated with fusion protein. (Original magnification:  $\times 200$ )

##### ELISA

Recommended dilution: 5000-10000

联系电话: 4008-898-798, 021-61725725

联系QQ: 2881505695, 2881505696

邮箱: [mlbio\\_cn@yeah.net](mailto:mlbio_cn@yeah.net)

网址: [www.mlbio.cn](http://www.mlbio.cn)