

Anti-BCO2 antibody

Cat. No.	ml124243
Package	25 µl/100 µl/200 µl
Storage	-20°C, pH7.4 PBS, 0.05% NaN ₃ , 40% Glycerol

Product overview

Description	Anti-BCO2 rabbit polyclonal antibody
Applications	ELISA, IHC
Immunogen	Fusion protein of human BCO2
Reactivity	Human, Mouse
Content	0.4 mg/ml
Host species	Rabbit
Ig class	Immunogen-specific rabbit IgG
Purification	Antigen affinity purification

Target information

Symbol	BCO2
Full name	beta-carotene oxygenase 2
Synonyms	BCDO2; B-DIOX-II
Swissprot	Q9BYV7

Target Background

This gene encodes an enzyme which oxidizes carotenoids such as beta-carotene during the biosynthesis of vitamin A. Multiple transcript variants encoding different isoforms have been found for this gene.

订购热线: 4008-898-798

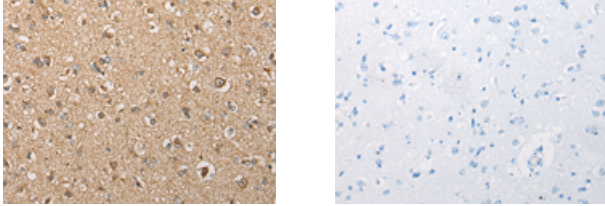
Applications

Immunohistochemistry

Predicted cell location: Cytoplasm

Positive control: Human brain

Recommended dilution: 25-100



The image on the left is immunohistochemistry of paraffin-embedded Human brain tissue using ml124243(BCO2 Antibody) at dilution 1/30, on the right is treated with fusion protein. (Original magnification: ×200)

ELISA

Recommended dilution: 5000-10000

联系电话: 4008-898-798, 021-61725725

联系QQ: 2881505695, 2881505696

邮箱: mlbio_cn@yeah.net

网址: www.mlbio.cn