

## Anti-PHF21A antibody

<b>Cat. No.</b>	ml124255
<b>Package</b>	25 µl/100 µl/200 µl
<b>Storage</b>	-20°C, pH7.4 PBS, 0.05% NaN <sub>3</sub> , 40% Glycerol

### Product overview

<b>Description</b>	Anti-PHF21A rabbit polyclonal antibody
<b>Applications</b>	ELISA, IHC
<b>Immunogen</b>	Fusion protein of human PHF21A
<b>Reactivity</b>	Human, Mouse
<b>Content</b>	0.7 mg/ml
<b>Host species</b>	Rabbit
<b>Ig class</b>	Immunogen-specific rabbit IgG
<b>Purification</b>	Antigen affinity purification

### Target information

<b>Symbol</b>	PHF21A
<b>Full name</b>	PHD finger protein 21A
<b>Synonyms</b>	BHC80; BM-006
<b>Swissprot</b>	Q96BD5

### Target Background

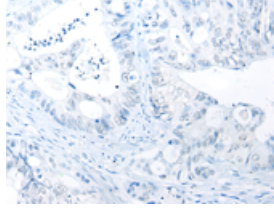
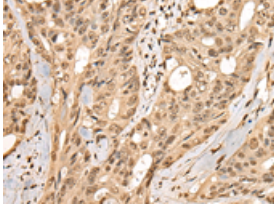
Zinc-finger proteins contain DNA-binding domains and have a wide variety of functions, most of which encompass some form of transcriptional activation or repression. PHF21A (PHD finger protein 21A), also known as BRAF35-HDAC complex protein BHC80, is a 680 amino acid nuclear protein that contains one PHD-type zinc finger and one A.T hook DNA-binding domain, suggesting involvement in transcriptional regulation events. PHF21A is a component of the BHC complex, which is responsible for repressing transcription of neuron-specific genes in non-neuronal cells. The BHC complex acts as a chromatin modifier that deacetylates and demethylates specific sites on histones. PHF21A may act as a scaffold within the BHC complex. Predominantly expressed in brain, three isoforms of PHF21A exist as a result of alternative splicing events.

订购热线: 4008-898-798

### Applications

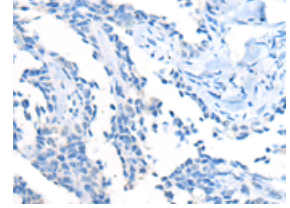
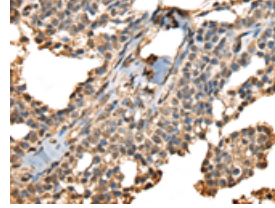
#### Immunohistochemistry

Predicted cell location: Cytoplasm and Nucleus  
Positive control: Human colorectal cancer  
Recommended dilution: 40-200



The image on the left is immunohistochemistry of paraffin-embedded Human colorectal cancer tissue using ml124255(PHF21A Antibody) at dilution 1/50, on the right is treated with fusion protein. (Original magnification: ×200)

Predicted cell location: Cytoplasm and Nucleus  
Positive control: Human ovarian cancer  
Recommended dilution: 40-200



The image on the left is immunohistochemistry of paraffin-embedded Human ovarian cancer tissue using ml124255(PHF21A Antibody) at dilution 1/50, on the right is treated with fusion protein. (Original magnification: ×200)

#### ELISA

Recommended dilution: 5000-10000

联系电话: 4008-898-798, 021-61725725

联系QQ: 2881505695, 2881505696

邮箱: [mlbio\\_cn@yeah.net](mailto:mlbio_cn@yeah.net)

网址: [www.mlbio.cn](http://www.mlbio.cn)