

Anti-MCPH1 antibody

Cat. No.	ml124277
Package	25 µl/100 µl/200 µl
Storage	-20°C, pH7.4 PBS, 0.05% NaN ₃ , 40% Glycerol

Product overview

Description	Anti-MCPH1 rabbit polyclonal antibody
Applications	ELISA, IHC
Immunogen	Fusion protein of human MCPH1
Reactivity	Human
Content	0.5 mg/ml
Host species	Rabbit
Ig class	Immunogen-specific rabbit IgG
Purification	Antigen affinity purification

Target information

Symbol	MCPH1
Full name	microcephalin 1
Synonyms	MCT; BRIT1
Swissprot	Q8NEM0

Target Background

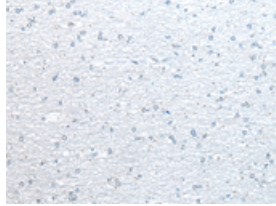
This gene encodes a DNA damage response protein. The encoded protein may play a role in G2/M checkpoint arrest via maintenance of inhibitory phosphorylation of cyclin-dependent kinase 1. Mutations in this gene have been associated with primary autosomal recessive microcephaly 1 and premature chromosome condensation syndrome. Alternatively spliced transcript variants have been described.

订购热线: 4008-898-798

Applications

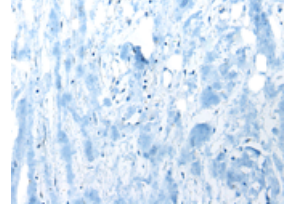
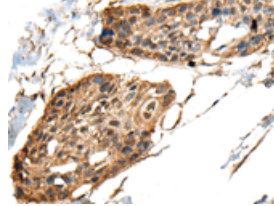
Immunohistochemistry

Predicted cell location: Nucleus and Cytoplasm
Positive control: Human brain
Recommended dilution: 30-150



The image on the left is immunohistochemistry of paraffin-embedded Human brain tissue using ml124277(MCPH1 Antibody) at dilution 1/40, on the right is treated with fusion protein. (Original magnification: ×200)

Predicted cell location: Nucleus and Cytoplasm
Positive control: Human esophagus cancer
Recommended dilution: 30-150



The image on the left is immunohistochemistry of paraffin-embedded Human esophagus cancer tissue using ml124277(MCPH1 Antibody) at dilution 1/40, on the right is treated with fusion protein. (Original magnification: ×200)

ELISA

Recommended dilution: 5000-10000

联系电话: 4008-898-798, 021-61725725

联系QQ: 2881505695, 2881505696

邮箱: mlbio_cn@yeah.net

网址: www.mlbio.cn