

## Anti-SERPINH1 antibody

<b>Cat. No.</b>	ml262935
<b>Package</b>	25 µl/100 µl/200 µl
<b>Storage</b>	-20°C, pH7.4 PBS, 0.05% NaN <sub>3</sub> , 40% Glycerol

### Product overview

<b>Description</b>	Anti-SERPINH1 rabbit polyclonal antibody
<b>Applications</b>	ELISA, WB
<b>Immunogen</b>	Synthetic peptide of human SERPINH1
<b>Reactivity</b>	Human, Mouse, Rat
<b>Content</b>	1 mg/ml
<b>Host species</b>	Rabbit
<b>Ig class</b>	Immunogen-specific rabbit IgG
<b>Purification</b>	Antigen affinity purification

### Target information

<b>Symbol</b>	SERPINH1
<b>Full name</b>	serpin peptidase inhibitor, clade H (heat shock protein 47), member 1, (collagen binding protein 1)
<b>Synonyms</b>	CBP1; CBP2; OI10; gp46; AsTP3; HSP47; PIG14; PPR0M; RA-A47; SERPINH2
<b>Swissprot</b>	P50454

### Target Background

This gene encodes a member of the serpin superfamily of serine proteinase inhibitors. The encoded protein is localized to the endoplasmic reticulum and plays a role in collagen biosynthesis as a collagen-specific molecular chaperone. Autoantibodies to the encoded protein have been found in patients with rheumatoid arthritis. Expression of this gene may be a marker for cancer, and nucleotide polymorphisms in this gene may be associated with preterm birth caused by preterm premature rupture of membranes.

订购热线: 4008-898-798

**Applications**

**Western blotting**

Predicted band size:46 kDa

Positive control:NIH/3T3 cell

Recommended dilution: 500-2000

Gel: 8%SDS-PAGE

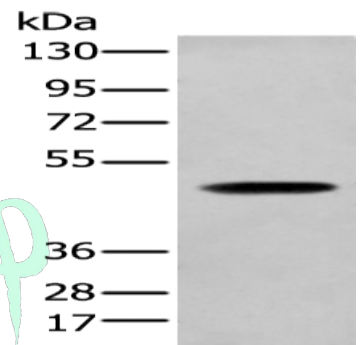
Lysate: 40 µg

Lane: NIH/3T3 cell

Primary antibody: ml262935(SERPINH1 Antibody) at dilution 1/450

Secondary antibody: Goat anti rabbit IgG at 1/8000 dilution

Exposure time: 5 seconds



**ELISA**

Recommended dilution:5000-10000

联系电话: 4008-898-798, 021-61725725

联系QQ: 2881505695, 2881505696

邮箱: mlbio\_cn@yeah.net

网址: www.mlbio.cn