

Anti-BRI3BP antibody

Cat. No.	ml262942
Package	25 µl/100 µl/200 µl
Storage	-20°C, pH7.4 PBS, 0.05% NaN ₃ , 40% Glycerol

Product overview

Description	Anti-BRI3BP rabbit polyclonal antibody
Applications	ELISA, WB, IHC
Immunogen	Synthetic peptide of human BRI3BP
Reactivity	Human, Mouse
Content	0.6 mg/ml
Host species	Rabbit
Ig class	Immunogen-specific rabbit IgG
Purification	Antigen affinity purification

Target information

Symbol	BRI3BP
Full name	BRI3 binding protein

Synonyms KG19; BNAS1; HCCR-1; HCCR-2; HCCRBP-1

Swissprot Q8WY22

Target Background

BRI3BP (BRI3 binding protein), also known as BNAS1, HCCR-1, I3-binding protein or cervical cancer 1 proto-oncogene-binding protein KG19, is a 251 amino acid multi-pass membrane protein. Though widely expressed, BRI3BP is found at highest levels in brain, kidney and liver where it localizes to the endoplasmic reticulum (ER) and is involved in ER structural dynamics and mitochondrial viability. Possessing pro-apoptotic properties and the ability to potentiate drug-induced apoptosis, BRI3BP overexpression has been shown to enhance caspase-3 and mitochondrial cytochrome c release in etoposide-treated human embryonic kidney 293T cells.

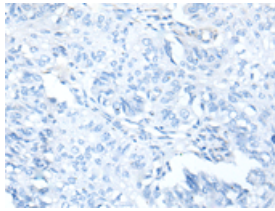
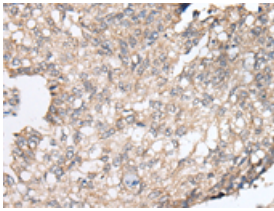
Applications

Immunohistochemistry

Predicted cell location: Cell membrane

Positive control: Human lung cancer

Recommended dilution: 25-100

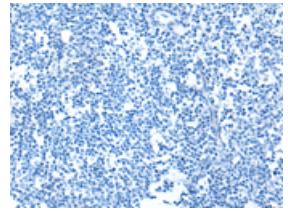
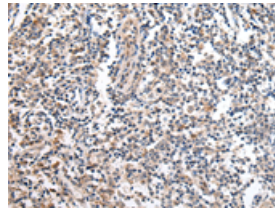


The image on the left is immunohistochemistry of paraffin-embedded Human lung cancer tissue using ml262942(BRI3BP Antibody) at dilution 1/20, on the right is treated with synthetic peptide. (Original magnification: $\times 200$)

Predicted cell location: Cell membrane

Positive control: Human tonsil

Recommended dilution: 25-100



The image on the left is immunohistochemistry of paraffin-embedded Human tonsil tissue using ml262942(BRI3BP Antibody) at dilution 1/20, on the right is treated with synthetic peptide. (Original magnification: $\times 200$)

Western blotting

Predicted band size: 28 kDa

Positive control: K562 cell, Mouse brain tissue and RAW264.7 cell

Recommended dilution: 200-1000

订购热线: 4008-898-798

Gel: 12%SDS-PAGE

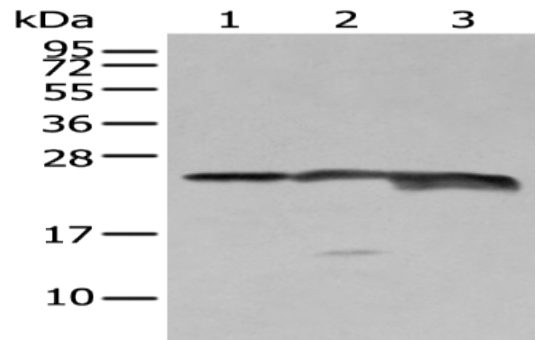
Lysate: 40 μ g

Lane 1-3: K562 cell, Mouse brain tissue and RAW264.7 cell lysates

Primary antibody: ml262942(BRI3BP Antibody) at dilution 1/250

Secondary antibody: Goat anti rabbit IgG at 1/8000 dilution

Exposure time: 5 seconds



ELISA

Recommended dilution: 5000-10000

联系电话: 4008-898-798, 021-61725725

联系QQ: 2881505695, 2881505696

邮箱: mlbio_cn@yeah.net

网址: www.mlbio.cn