

Anti-CXCL16 antibody

Cat. No.	ml263013
Package	25 µl/100 µl/200 µl
Storage	-20°C, pH7.4 PBS, 0.05% NaN ₃ , 40% Glycerol

Product overview

Description	Anti-CXCL16 rabbit polyclonal antibody
Applications	ELISA, WB
Immunogen	Synthetic peptide of human CXCL16
Reactivity	Human
Content	0.4 mg/ml
Host species	Rabbit
Ig class	Immunogen-specific rabbit IgG
Purification	Antigen affinity purification

Target information

Symbol	CXCL16
Full name	chemokine (C-X-C motif) ligand 16
Synonyms	SRPSOX; CXCLG16; SR-PSOX
Swissprot	Q9H2A7

Target Background

CXCL16, also known as SR-PSOX (scavenger receptor for phosphatidylserine and oxidized lipoprotein), binds to CXCR6/Bonzo/STRL33, induces a strong chemotactic response and induces calcium mobilization. CXCL16, an alpha (CXC) chemokine, also has characteristics of CC chemokines and a structure similar to fractalkine (neurotactin) in having a transmembrane region and a chemokine domain suspended by a mucin-like stalk. Northern blot analysis of mouse and human tissues detect a 2.2-kb CXCL16 transcript in spleen, lymph nodes, Peyer patches, lung, kidney, small intestine, and thymus, with weak expression in heart and liver and no expression in brain and bone marrow. Flow cytometry and Western blot analysis demonstrate expression of a glycosylated cell-surface protein and a cell supernatant soluble protein.

订购热线: 4008-898-798

Applications

Western blotting

Predicted band size:28 kDa

Positive control:Hela and HEPG2 cell lysates

Recommended dilution: 200-1000

Gel: 12%SDS-PAGE

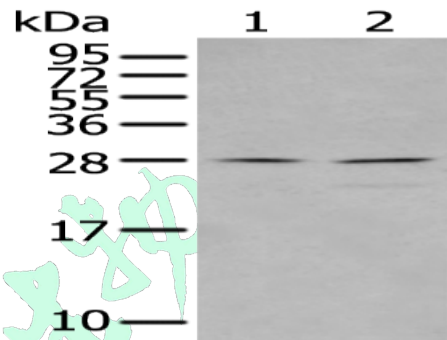
Lysate: 40 µg

Lane 1-2: Hela and HEPG2 cell lysates

Primary antibody: ml263013(CXCL16 Antibody) at dilution 1/300

Secondary antibody: Goat anti rabbit IgG at 1/8000 dilution

Exposure time: 1 minute



ELISA

Recommended dilution:5000-10000

联系电话: 4008-898-798, 021-61725725

联系QQ: 2881505695, 2881505696

邮箱: mlbio_cn@yeah.net

网址: www.mlbio.cn