

Anti-CCL18 antibody

Cat. No.	ml263077
Package	25 µl/100 µl/200 µl
Storage	-20°C, pH7.4 PBS, 0.05% NaN ₃ , 40% Glycerol

Product overview

Description	Anti-CCL18 rabbit polyclonal antibody
Applications	ELISA, WB
Immunogen	Synthetic peptide of human CCL18
Reactivity	Human
Content	1.1 mg/ml
Host species	Rabbit
Ig class	Immunogen-specific rabbit IgG
Purification	Antigen affinity purification

Target information

Symbol	CCL18
Full name	chemokine (C-C motif) ligand 18 (pulmonary and activation-regulated)
Synonyms	CKb7; PARC; AMAC1; DCCK1; MIP-4; AMAC-1; DC-CK1; SCYA18
Swissprot	P55774

Target Background

This antimicrobial gene is one of several Cys-Cys (CC) cytokine genes clustered on the q arm of chromosome 17. Cytokines are a family of secreted proteins involved in immunoregulatory and inflammatory processes. The CC cytokines are proteins characterized by two adjacent cysteines. The cytokine encoded by this gene displays chemotactic activity for naive T cells, CD4⁺ and CD8⁺ T cells and nonactivated lymphocytes, but not for monocytes or granulocytes. This chemokine attracts naive T lymphocytes toward dendritic cells and activated macrophages in lymph nodes. It may play a role in both humoral and cell-mediated immunity responses.

订购热线: 4008-898-798

Applications

Western blotting

Predicted band size:10 kDa

Positive control:Human lung tissue lysate

Recommended dilution: 500-2000

Gel: 12%SDS-PAGE

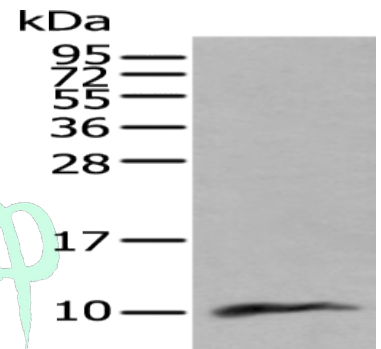
Lysate: 40 µg

Lane: Human lung tissue lysate

Primary antibody: ml263077(CCL18 Antibody) at dilution 1/400

Secondary antibody: Goat anti rabbit IgG at 1/8000 dilution

Exposure time: 2 minutes



ELISA

Recommended dilution:5000-10000

联系电话: 4008-898-798, 021-61725725

联系QQ: 2881505695, 2881505696

邮箱: mlbio_cn@yeah.net

网址: www.mlbio.cn