

Anti-CSPG4 antibody

Cat. No.	ml263124
Package	25 µl/100 µl/200 µl
Storage	-20°C, pH7.4 PBS, 0.05% NaN ₃ , 40% Glycerol

Product overview

Description	Anti-CSPG4 rabbit polyclonal antibody
Applications	ELISA, WB
Immunogen	Synthetic peptide of human CSPG4
Reactivity	Human, Mouse, Rat
Content	0.7 mg/ml
Host species	Rabbit
Ig class	Immunogen-specific rabbit IgG
Purification	Antigen affinity purification

Target information

Symbol	CSPG4
Full name	chondroitin sulfate proteoglycan 4
Synonyms	NG2; MCSP; MCSPG; MSK16; HMW-MAA; MEL-CSPG
Swissprot	Q6UVK1

Target Background

A human melanoma-associated chondroitin sulfate proteoglycan plays a role in stabilizing cell-substratum interactions during early events of melanoma cell spreading on endothelial basement membranes. CSPG4 represents an integral membrane chondroitin sulfate proteoglycan expressed by human malignant melanoma cells.

订购热线: 4008-898-798

Applications

Western blotting

Predicted band size:251 kDa

Positive control:A375 cell lysate

Recommended dilution: 200-1000

Gel: 6%SDS-PAGE

Lysate: 40 µg

Lane: A375 cell lysate

Primary antibody: ml263124(CSPG4 Antibody) at dilution 1/350

Secondary antibody: Goat anti rabbit IgG at 1/8000 dilution

Exposure time: 1 minute

kDa

250 —

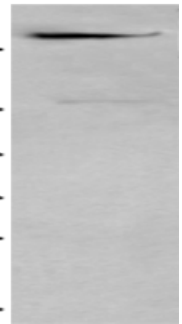
130 —

95 —

72 —

55 —

36 —



ELISA

Recommended dilution:5000-10000

联系电话: 4008-898-798, 021-61725725

联系QQ: 2881505695, 2881505696

邮箱: mlbio_cn@yeah.net

网址: www.mlbio.cn