

Anti-CNTN1 antibody

Cat. No.	ml263130
Package	25 µl/100 µl/200 µl
Storage	-20°C, pH7.4 PBS, 0.05% NaN ₃ , 40% Glycerol

Product overview

Description	Anti-CNTN1 rabbit polyclonal antibody
Applications	ELISA, WB, IHC
Immunogen	Synthetic peptide of human CNTN1
Reactivity	Human, Mouse, Rat
Content	0.9 mg/ml
Host species	Rabbit
Ig class	Immunogen-specific rabbit IgG
Purification	Antigen affinity purification

Target information

Symbol	CNTN1
Full name	contactin 1

Synonyms F3; GP135; MYPCN

Swissprot Q12860

Target Background

The protein encoded by this gene is a member of the immunoglobulin superfamily. It is a glycosylphosphatidylinositol (GPI)-anchored neuronal membrane protein that functions as a cell adhesion molecule. It may play a role in the formation of axon connections in the developing nervous system. Multiple alternatively spliced transcript variants encoding different isoforms have been found for this gene.

Applications

Immunohistochemistry

Predicted cell location: Cell membrane

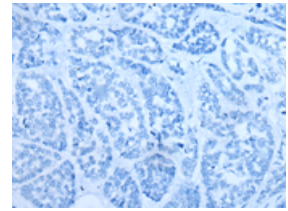
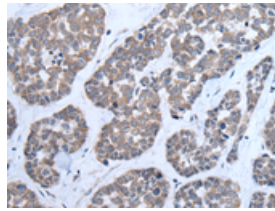
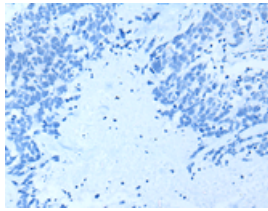
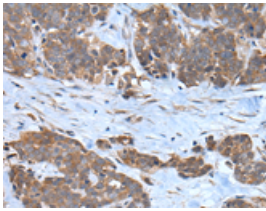
Predicted cell location: Cell membrane

Positive control: Human thyroid cancer

Positive control: Human esophagus cancer

Recommended dilution: 25-100

Recommended dilution: 25-100



The image on the left is immunohistochemistry of paraffin-embedded Human thyroid cancer tissue using ml263130(CNTN1 Antibody) at dilution 1/35, on the right is treated with synthetic peptide. (Original magnification: $\times 200$)

The image on the left is immunohistochemistry of paraffin-embedded Human esophagus cancer tissue using ml263130(CNTN1 Antibody) at dilution 1/35, on the right is treated with synthetic peptide. (Original magnification: $\times 200$)

Western blotting

Predicted band size: 113 kDa

Positive control: Human cerebella tissue, Human cerebrum tissue, Human fetal brain tissue, Mouse brain tissue, Rat brain tissue lysates

Recommended dilution: 500-2000

订购热线: 4008-898-798

Gel: 6%SDS-PAGE

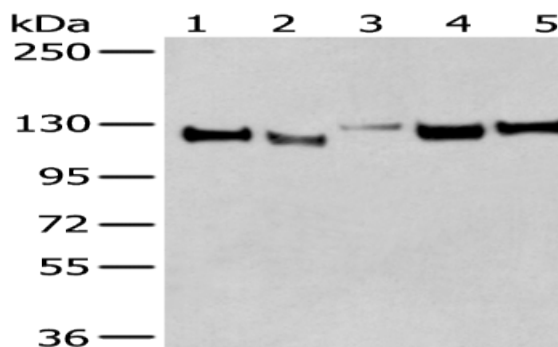
Lysate: 40 µg

Lane 1-5: Human cerebella tissue, Human cerebrum tissue, Human fetal brain tissue, Mouse brain tissue, Rat brain tissue lysates

Primary antibody: ml263130(CNTN1 Antibody) at dilution 1/350

Secondary antibody: Goat anti rabbit IgG at 1/8000 dilution

Exposure time: 10 seconds



ELISA

Recommended dilution: 5000-10000

联系电话: 4008-898-798, 021-61725725

联系QQ: 2881505695, 2881505696

邮箱: mlbio_cn@yeah.net

网址: www.mlbio.cn