

Anti-ZPLD1 antibody

| | |
|-----------------|---|
| Cat. No. | ml263152 |
| Package | 25 µl/100 µl/200 µl |
| Storage | -20°C, pH7.4 PBS, 0.05% NaN ₃ , 40% Glycerol |

Product overview

| | |
|---------------------|---------------------------------------|
| Description | Anti-ZPLD1 rabbit polyclonal antibody |
| Applications | ELISA, WB |
| Immunogen | Synthetic peptide of human ZPLD1 |
| Reactivity | Human, Mouse |
| Content | 0.5 mg/ml |
| Host species | Rabbit |
| Ig class | Immunogen-specific rabbit IgG |
| Purification | Antigen affinity purification |

Target information

| | |
|------------------|---|
| Symbol | ZPLD1 |
| Full name | zona pellucida-like domain containing 1 |
| Synonyms | |
| Swissprot | Q8TCW7 |

Target Background

Many proteins containing ZP (zona pellucida) domains play fundamental roles in development, immunity, hearing and cancer. These domains are located near the carboxy-terminus of the polypeptide and typically consist of approximately 260 amino acids. ZP domain-containing proteins are often glycosylated and are usually present in filaments or matrices and therefore are thought to be involved in protein polymerization. ZPLD1 (Zona pellucida-like domain-containing protein 1) is a 415 amino acid single-pass transmembrane protein that contains one ZP domain. The gene encoding ZPLD1 maps to human chromosome 3, which is made up of about 214 million bases encoding over 1,100 genes, including a chemokine receptor (CKR) gene cluster and a variety of human cancer-related gene loci. There are two isoforms of ZPLD1 that are produced as a result of alternative splicing events.

订购热线: 4008-898-798

Applications

Western blotting

Predicted band size:46 kDa

Positive control:Hela and A549 cell lysates

Recommended dilution: 200-1000

Gel: 8%SDS-PAGE

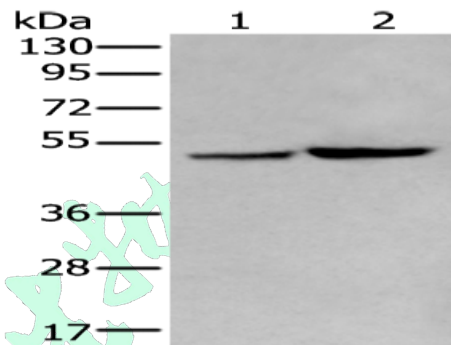
Lysate: 40 µg

Lane 1-2: Hela and A549 cell lysates

Primary antibody: ml263152(ZPLD1 Antibody) at dilution 1/200

Secondary antibody: Goat anti rabbit IgG at 1/8000 dilution

Exposure time: 30 seconds



ELISA

Recommended dilution:5000-10000

联系电话: 4008-898-798, 021-61725725

联系QQ: 2881505695, 2881505696

邮箱: mlbio_cn@yeah.net

网址: www.mlbio.cn