

Anti-UBQLN2 antibody

Cat. No.	ml263222
Package	25 µl/100 µl/200 µl
Storage	-20°C, pH7.4 PBS, 0.05% NaN ₃ , 40% Glycerol

Product overview

Description	Anti-UBQLN2 rabbit polyclonal antibody
Applications	ELISA, WB, IHC
Immunogen	Synthetic peptide of human UBQLN2
Reactivity	Human, Mouse
Content	0.6 mg/ml
Host species	Rabbit
Ig class	Immunogen-specific rabbit IgG
Purification	Antigen affinity purification

Target information

Symbol	UBQLN2
Full name	ubiquilin 2

Synonyms DSK2; ALS15; CHAP1; N4BP4; PLIC2; HRIHFB2157

Swissprot Q9UHD9

Target Background

This gene encodes an ubiquitin-like protein (ubiquilin) that shares high degree of similarity with related products in yeast, rat and frog. Ubiquilins contain a N-terminal ubiquitin-like domain and a C-terminal ubiquitin-associated domain. They physically associate with both proteasomes and ubiquitin ligases; and thus, are thought to functionally link the ubiquitination machinery to the proteasome to affect in vivo protein degradation. This ubiquilin has also been shown to bind the ATPase domain of the Hsp70-like Stch protein.

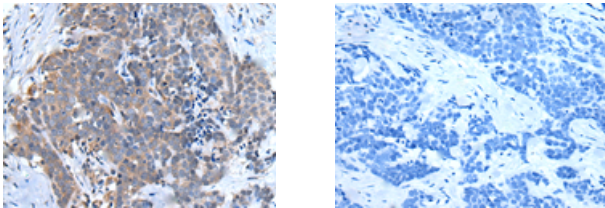
Applications

Immunohistochemistry

Predicted cell location: Cytoplasm and Nucleus

Positive control: Human thyroid cancer

Recommended dilution: 30-150



The image on the left is immunohistochemistry of paraffin-embedded Human thyroid cancer tissue using ml263222(UBQLN2 Antibody) at dilution 1/45, on the right is treated with synthetic peptide. (Original magnification: $\times 200$)

Western blotting

Predicted band size: 66 kDa

Positive control: SKOV3 cell lysate

Recommended dilution: 500-2000

订购热线: 4008-898-798

Gel: 8%SDS-PAGE

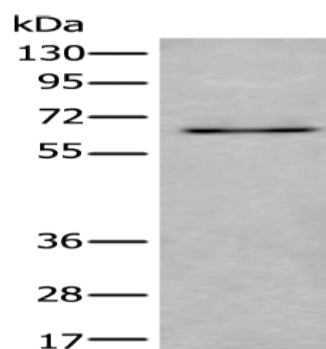
Lysate: 40 μ g

Lane: SKOV3 cell lysate

Primary antibody: ml263222(UBQLN2 Antibody) at dilution 1/500

Secondary antibody: Goat anti rabbit IgG at 1/8000 dilution

Exposure time: 1 minute



ELISA

Recommended dilution: 5000-10000

联系电话: 4008-898-798, 021-61725725

联系QQ: 2881505695, 2881505696

邮箱: mlbio_cn@yeah.net

网址: www.mlbio.cn