

## Anti-UNC5A antibody

<b>Cat. No.</b>	ml263236
<b>Package</b>	25 µl/100 µl/200 µl
<b>Storage</b>	-20°C, pH7.4 PBS, 0.05% NaN <sub>3</sub> , 40% Glycerol

### Product overview

<b>Description</b>	Anti-UNC5A rabbit polyclonal antibody
<b>Applications</b>	ELISA, WB, IHC
<b>Immunogen</b>	Synthetic peptide of human UNC5A
<b>Reactivity</b>	Human, Mouse, Rat
<b>Content</b>	0.3 mg/ml
<b>Host species</b>	Rabbit
<b>Ig class</b>	Immunogen-specific rabbit IgG
<b>Purification</b>	Antigen affinity purification

### Target information

<b>Symbol</b>	UNC5A
<b>Full name</b>	unc-5 netrin receptor A

**Synonyms**                      UNC5H1

**Swissprot**                        Q6ZN44

#### **Target Background**

UNC5A belongs to a family of netrin-1 (MIM 601614) receptors thought to mediate the chemorepulsive effect of netrin-1 on specific axons. For more information on UNC5 proteins, see UNC5C (MIM 603610).

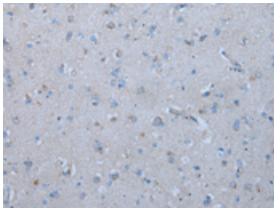
## Applications

### Immunohistochemistry

Predicted cell location: Cell membrane

Positive control: Human brain

Recommended dilution: 20-100

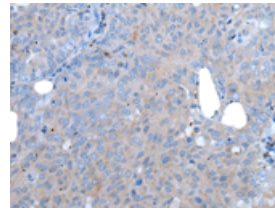


The image on the left is immunohistochemistry of paraffin-embedded Human brain tissue using ml263236(UNC5A Antibody) at dilution 1/30, on the right is treated with synthetic peptide. (Original magnification:  $\times 200$ )

Predicted cell location: Cell membrane

Positive control: Human ovarian cancer

Recommended dilution: 20-100



The image on the left is immunohistochemistry of paraffin-embedded Human ovarian cancer tissue using ml263236(UNC5A Antibody) at dilution 1/30, on the right is treated with synthetic peptide. (Original magnification:  $\times 200$ )

### Western blotting

Predicted band size: 93 kDa

Positive control: Human testis tissue lysate

Recommended dilution: 200-1000

订购热线: 4008-898-798

Gel: 6%SDS-PAGE

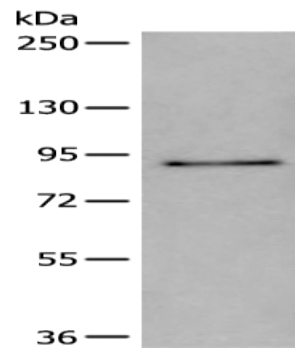
Lysate: 40  $\mu$ g

Lane: Human testis tissue lysate

Primary antibody: ml263236(UNC5A Antibody) at dilution 1/200

Secondary antibody: Goat anti rabbit IgG at 1/8000 dilution

Exposure time: 90 seconds



#### ELISA

Recommended dilution: 5000-10000

联系电话: 4008-898-798, 021-61725725

联系QQ: 2881505695, 2881505696

邮箱: [mlbio\\_cn@yeah.net](mailto:mlbio_cn@yeah.net)

网址: [www.mlbio.cn](http://www.mlbio.cn)