

Anti-KLHL36 antibody

| | |
|-----------------|---|
| Cat. No. | ml263331 |
| Package | 25 µl/100 µl/200 µl |
| Storage | -20°C, pH7.4 PBS, 0.05% NaN ₃ , 40% Glycerol |

Product overview

| | |
|---------------------|--|
| Description | Anti-KLHL36 rabbit polyclonal antibody |
| Applications | ELISA, WB |
| Immunogen | Synthetic peptide of human KLHL36 |
| Reactivity | Human, Mouse, Rat |
| Content | 0.4 mg/ml |
| Host species | Rabbit |
| Ig class | Immunogen-specific rabbit IgG |
| Purification | Antigen affinity purification |

Target information

| | |
|------------------|-----------------------------|
| Symbol | KLHL36 |
| Full name | kelch like family member 36 |
| Synonyms | C16orf44 |
| Swissprot | Q8N4N3 |

Target Background

C16orf44 is a 616 amino acid protein that contains six Kelch repeats, one BTB/POZ domain and one BTB/Kelch associated (BACK) domain. C16orf44 is believed to play a role in protein ubiquitination and may function as a substrate-specific adapter of an E3 ubiquitin-protein ligase complex. E3 ligases accept a ubiquitin residue from an E2 ubiquitin-conjugating enzyme and immediately transfer that residue to a protein that is targeted for degradation. Specifically, C16orf44 interacts with CUL-3, a member of the cullin family of mediators that participate in the selective targeting of proteins for ubiquitin-mediated proteolysis. Due to alternative splicing events, two isoforms of C16orf44 are expressed.

订购热线: 4008-898-798

Applications

Western blotting

Predicted band size:70 kDa

Positive control:Human bladder transitional cell carcinoma grade 2-3 tissue lysate

Recommended dilution: 200-1000

Gel: 8%SDS-PAGE

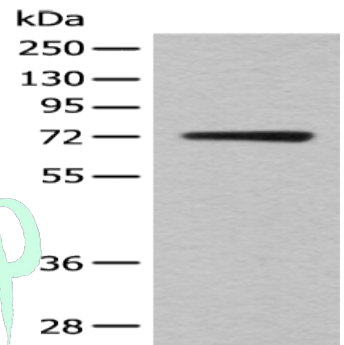
Lysate: 40 μ g

Lane: Human bladder transitional cell carcinoma grade 2-3 tissue lysate

Primary antibody: ml263331(KLHL36 Antibody) at dilution 1/300

Secondary antibody: Goat anti rabbit IgG at 1/8000 dilution

Exposure time: 1 minute



ELISA

Recommended dilution:5000-10000

联系电话: 4008-898-798, 021-61725725

联系QQ: 2881505695, 2881505696

邮箱: mlbio_cn@yeah.net

网址: www.mlbio.cn