

## Anti-ALDH7A1 antibody

<b>Cat. No.</b>	ml263522
<b>Package</b>	25 µl/100 µl/200 µl
<b>Storage</b>	-20°C, pH7.4 PBS, 0.05% NaN <sub>3</sub> , 40% Glycerol

### Product overview

<b>Description</b>	Anti-ALDH7A1 rabbit polyclonal antibody
<b>Applications</b>	ELISA, WB, IHC
<b>Immunogen</b>	Synthetic peptide of human ALDH7A1
<b>Reactivity</b>	Human, Mouse, Rat
<b>Content</b>	0.54 mg/ml
<b>Host species</b>	Rabbit
<b>Ig class</b>	Immunogen-specific rabbit IgG
<b>Purification</b>	Antigen affinity purification

### Target information

<b>Symbol</b>	ALDH7A1
<b>Full name</b>	aldehyde dehydrogenase 7 family member A1

**Synonyms** EPD; PDE; ATQ1

**Swissprot** P49419

### **Target Background**

The protein encoded by this gene is a member of subfamily 7 in the aldehyde dehydrogenase gene family. These enzymes are thought to play a major role in the detoxification of aldehydes generated by alcohol metabolism and lipid peroxidation. This particular member has homology to a previously described protein from the green garden pea, the 26g pea turgor protein. It is also involved in lysine catabolism that is known to occur in the mitochondrial matrix. Recent reports show that this protein is found both in the cytosol and the mitochondria, and the two forms likely arise from the use of alternative translation initiation sites. An additional variant encoding a different isoform has also been found for this gene. Mutations in this gene are associated with pyridoxine-dependent epilepsy. Several related pseudogenes have also been identified.

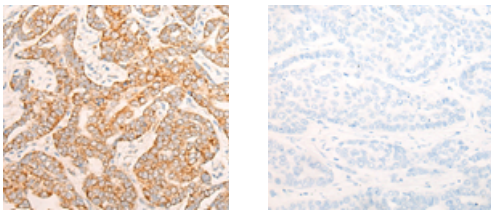
## Applications

### Immunohistochemistry

Predicted cell location: Cytoplasm

Positive control: Human liver cancer

Recommended dilution: 20-100



The image on the left is immunohistochemistry of paraffin-embedded Human liver cancer tissue using ml263522(ALDH7A1 Antibody) at dilution 1/20, on the right is treated with synthetic peptide. (Original magnification:  $\times 200$ )

### Western blotting

Predicted band size: 59 kDa

Positive control: Rat liver tissue, A172 and HepG2 cell, Mouse liver tissue, Hela cell, Human liver tissue and Human fetal liver tissue lysates

Recommended dilution: 200-1000

订购热线: 4008-898-798

Gel: 8%SDS-PAGE

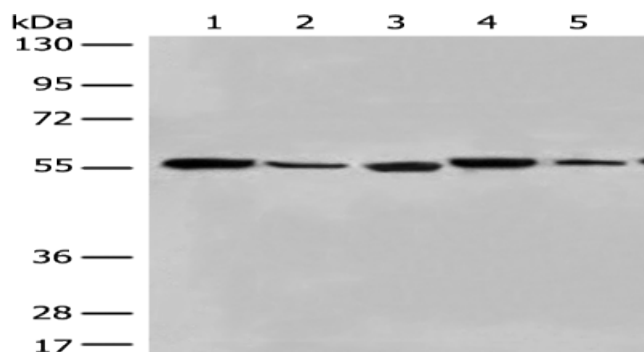
Lysate: 40  $\mu$ g

Lane 1-7: Rat liver tissue, A172 and HepG2 cell, Mouse liver tissue, Hela cell, Human liver tissue and Human fetal liver tissue lysates

Primary antibody: ml263522(ALDH7A1 Antibody) at dilution 1/250

Secondary antibody: Goat anti rabbit IgG at 1/8000 dilution

Exposure time: 5 seconds



## ELISA

Recommended dilution: 5000-10000

联系电话: 4008-898-798, 021-61725725

联系QQ: 2881505695, 2881505696

邮箱: [mlbio\\_cn@yeah.net](mailto:mlbio_cn@yeah.net)

网址: [www.mlbio.cn](http://www.mlbio.cn)