

Anti-NCBP1 antibody

Cat. No.	ml263556
Package	25 µl/100 µl/200 µl
Storage	-20°C, pH7.4 PBS, 0.05% NaN ₃ , 40% Glycerol

Product overview

Description	Anti-NCBP1 rabbit polyclonal antibody
Applications	ELISA, WB
Immunogen	Synthetic peptide of human NCBP1
Reactivity	Human, Mouse, Rat
Content	0.3 mg/ml
Host species	Rabbit
Ig class	Immunogen-specific rabbit IgG
Purification	Antigen affinity purification

Target information

Symbol	NCBP1
Full name	nuclear cap binding protein subunit 1
Synonyms	NCBP; Sto1; CBP80
Swissprot	Q09161

Target Background

The product of this gene is a component of the nuclear cap-binding protein complex (CBC), which binds to the monomethylated 5' cap of nascent pre-mRNA in the nucleoplasm. The encoded protein promotes high-affinity mRNA-cap binding and associates with the CTD of RNA polymerase II. The CBC promotes pre-mRNA splicing, 3'-end processing, RNA nuclear export, and nonsense-mediated mRNA decay.

订购热线: 4008-898-798

Applications

Western blotting

Predicted band size:92 kDa

Positive control:HEPG2, HT-29, HeLa and 293T cell lysates

Recommended dilution: 200-1000

Gel: 6%SDS-PAGE

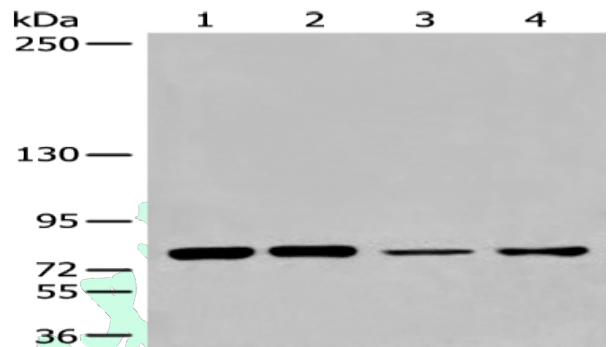
Lysate: 40 µg

Lane 1-4: HEPG2, HT-29, HeLa and 293T cell lysates

Primary antibody: ml263556(NCBP1 Antibody) at dilution 1/200

Secondary antibody: Goat anti rabbit IgG at 1/8000 dilution

Exposure time: 20 seconds



ELISA

Recommended dilution:5000-10000

联系电话: 4008-898-798, 021-61725725

联系QQ: 2881505695, 2881505696

邮箱: mlbio_cn@yeah.net

网址: www.mlbio.cn