

## Anti-DYRK1A antibody

<b>Cat. No.</b>	ml263569
<b>Package</b>	25 µl/100 µl/200 µl
<b>Storage</b>	-20°C, pH7.4 PBS, 0.05% NaN <sub>3</sub> , 40% Glycerol

### Product overview

<b>Description</b>	Anti-DYRK1A rabbit polyclonal antibody
<b>Applications</b>	ELISA, WB, IHC
<b>Immunogen</b>	Synthetic peptide of human DYRK1A
<b>Reactivity</b>	Human, Mouse, Rat
<b>Content</b>	0.9 mg/ml
<b>Host species</b>	Rabbit
<b>Ig class</b>	Immunogen-specific rabbit IgG
<b>Purification</b>	Antigen affinity purification

### Target information

<b>Symbol</b>	DYRK1A
<b>Full name</b>	dual specificity tyrosine phosphorylation regulated kinase 1A

**Synonyms** MNB; DYRK; HP86; MNBH; MRD7; DYRK1

**Swissprot** Q13627

### **Target Background**

This gene encodes a member of the Dual-specificity tyrosine phosphorylation-regulated kinase (DYRK) family. This member contains a nuclear targeting signal sequence, a protein kinase domain, a leucine zipper motif, and a highly conservative 13-consecutive-histidine repeat. It catalyzes its autophosphorylation on serine/threonine and tyrosine residues. It may play a significant role in a signaling pathway regulating cell proliferation and may be involved in brain development. This gene is a homolog of *Drosophila* *mnb* (minibrain) gene and rat *Dyrk* gene. It is localized in the Down syndrome critical region of chromosome 21, and is considered to be a strong candidate gene for learning defects associated with Down syndrome. Alternative splicing of this gene generates several transcript variants differing from each other either in the 5' UTR or in the 3' coding region. These variants encode at least five different isoforms.

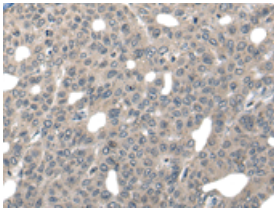
## Applications

### Immunohistochemistry

Predicted cell location: Cytoplasm or Nucleus

Positive control: Human liver cancer

Recommended dilution: 25-100

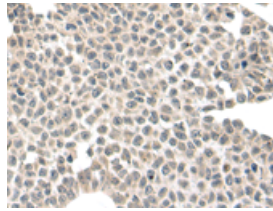


The image on the left is immunohistochemistry of paraffin-embedded Human liver cancer tissue using ml263569(DYRK1A Antibody) at dilution 1/30, on the right is treated with synthetic peptide. (Original magnification: ×200)

Predicted cell location: Cytoplasm or Nucleus

Positive control: Human ovarian cancer

Recommended dilution: 25-100



The image on the left is immunohistochemistry of paraffin-embedded Human ovarian cancer tissue using ml263569(DYRK1A Antibody) at dilution 1/30, on the right is treated with synthetic peptide. (Original magnification: ×200)

### Western blotting

Predicted band size: 85 kDa

Positive control: 293T, HEPG2, K562 and PC-3 cell lysates

Recommended dilution: 200-1000

订购热线: 4008-898-798

Gel: 6%SDS-PAGE

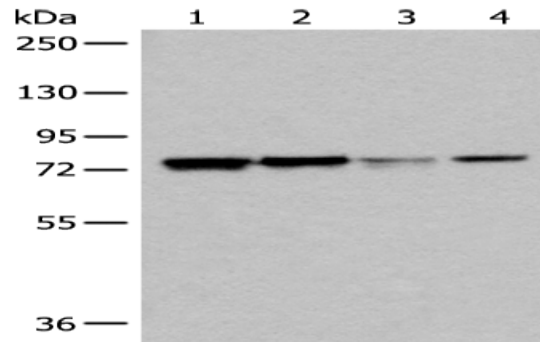
Lysate: 40  $\mu$ g

Lane 1-4: 293T,HEPG2,K562 and PC-3 cell lysates

Primary antibody: ml263569(DYRK1A Antibody) at dilution 1/200

Secondary antibody: Goat anti rabbit IgG at 1/8000 dilution

Exposure time: 5 seconds



#### ELISA

Recommended dilution: 5000-10000

联系电话: 4008-898-798, 021-61725725

联系QQ: 2881505695, 2881505696

邮箱: [mlbio\\_cn@yeah.net](mailto:mlbio_cn@yeah.net)

网址: [www.mlbio.cn](http://www.mlbio.cn)