

Anti-IFFO2 antibody

Cat. No.	ml263571
Package	25 µl/100 µl/200 µl
Storage	-20°C, pH7.4 PBS, 0.05% NaN ₃ , 40% Glycerol

Product overview

Description	Anti-IFFO2 rabbit polyclonal antibody
Applications	ELISA, WB
Immunogen	Synthetic peptide of human IFFO2
Reactivity	Human, Mouse, Rat
Content	0.1 mg/ml
Host species	Rabbit
Ig class	Immunogen-specific rabbit IgG
Purification	Antigen affinity purification

Target information

Symbol	IFFO2
Full name	intermediate filament family orphan 2
Synonyms	
Swissprot	Q5TF58

Target Background

IFFO2 (intermediate filament family orphan 2) is 517 amino acid protein that is encoded by a gene mapping to human chromosome 1p36.13 and mouse chromosome 4 D3. Human chromosome 1 spans 260 million base pairs, contains over 3,000 genes and comprises nearly 8% of the human genome. Chromosome 1 houses a large number of disease-associated genes, including those that are involved in familial adenomatous polyposis, Stickler syndrome, Parkinson's disease, Gaucher disease, schizophrenia and Usher syndrome. Aberrations in chromosome 1 are found in a variety of cancers, including head and neck cancer, malignant melanoma and multiple myeloma.

订购热线: 4008-898-798

Applications

Western blotting

Predicted band size:57 kDa

Positive control:Mouse heart tissue lysate

Recommended dilution: 200-1000

Gel: 8%SDS-PAGE

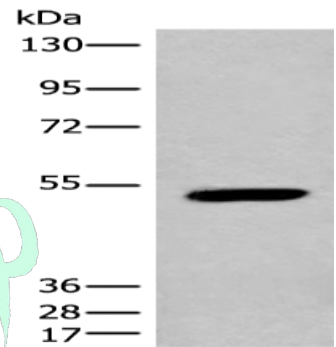
Lysate: 40 µg

Lane: Mouse heart tissue lysate

Primary antibody: ml263571(IFFO2 Antibody) at dilution 1/200

Secondary antibody: Goat anti rabbit IgG at 1/8000 dilution

Exposure time: 2 minutes



ELISA

Recommended dilution:2000-5000

联系电话: 4008-898-798, 021-61725725

联系QQ: 2881505695, 2881505696

邮箱: mlbio_cn@yeah.net

网址: www.mlbio.cn