

Anti-IL7R antibody

Cat. No.	ml263820
Package	25 µl/100 µl/200 µl
Storage	-20°C, pH7.4 PBS, 0.05% NaN ₃ , 40% Glycerol

Product overview

Description	Anti-IL7R rabbit polyclonal antibody
Applications	ELISA, WB
Immunogen	Synthetic peptide of human IL7R
Reactivity	Human
Content	2.22 mg/ml
Host species	Rabbit
Ig class	Immunogen-specific rabbit IgG
Purification	Antigen affinity purification

Target information

Symbol	IL7R
Full name	interleukin 7 receptor
Synonyms	ILRA; CD127; IL7RA; CDW127; IL-7R-alpha
Swissprot	P16871

Target Background

The protein encoded by this gene is a receptor for interleukin 7 (IL7). The function of this receptor requires the interleukin 2 receptor, gamma chain (IL2RG), which is a common gamma chain shared by the receptors of various cytokines, including interleukins 2, 4, 7, 9, and 15. This protein has been shown to play a critical role in V(D)J recombination during lymphocyte development. Defects in this gene may be associated with severe combined immunodeficiency (SCID). Alternatively spliced transcript variants have been found.

订购热线: 4008-898-798

Applications

Western blotting

Predicted band size:52 kDa

Positive control:Jurkat cell and Human fetal brain tissue lysates

Recommended dilution: 500-2000

Gel: 8%SDS-PAGE

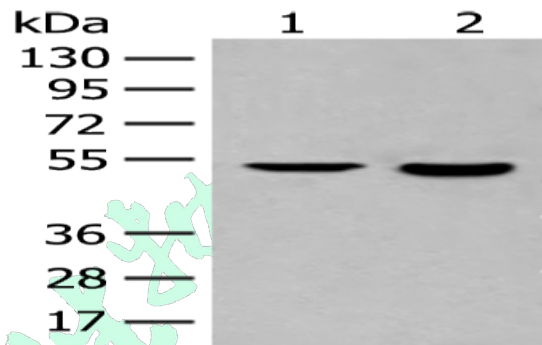
Lysate: 40 μ g

Lane 1-2: Jurkat cell and Human fetal brain tissue lysates

Primary antibody: ml263820(IL7R Antibody) at dilution 1/800

Secondary antibody: Goat anti rabbit IgG at 1/8000 dilution

Exposure time: 10 seconds



ELISA

Recommended dilution:5000-10000

联系电话: 4008-898-798, 021-61725725

联系QQ: 2881505695, 2881505696

邮箱: mlbio_cn@yeah.net

网址: www.mlbio.cn