

## Anti-NIPSNAP2 antibody

<b>Cat. No.</b>	ml263857
<b>Package</b>	25 µl/100 µl/200 µl
<b>Storage</b>	-20°C, pH7.4 PBS, 0.05% NaN <sub>3</sub> , 40% Glycerol

### Product overview

<b>Description</b>	Anti-NIPSNAP2 rabbit polyclonal antibody
<b>Applications</b>	ELISA, WB
<b>Immunogen</b>	Synthetic peptide of human NIPSNAP2
<b>Reactivity</b>	Human, Mouse
<b>Content</b>	1.08 mg/ml
<b>Host species</b>	Rabbit
<b>Ig class</b>	Immunogen-specific rabbit IgG
<b>Purification</b>	Antigen affinity purification

### Target information

<b>Symbol</b>	NIPSNAP2
<b>Full name</b>	nipsnap homolog 2
<b>Synonyms</b>	GBAS
<b>Swissprot</b>	O75323

### Target Background

This gene encodes a member of the NipSnap family of proteins that may be involved in vesicular transport. The encoded protein is localized to mitochondria and plays a role in oxidative phosphorylation. A pseudogene of this gene is located on the long arm of chromosome 2. Alternatively spliced transcript variants encoding multiple isoforms have been observed for this gene.

订购热线: 4008-898-798

**Applications**

**Western blotting**

Predicted band size:34 kDa

Positive control:Hela, HT-29 and HEPG2 cell, Human liver tissue, Human fetal liver tissue, Mouse liver tissue and Human fetal brain tissue lysates

Recommended dilution: 500-2000

Gel: 12%SDS-PAGE

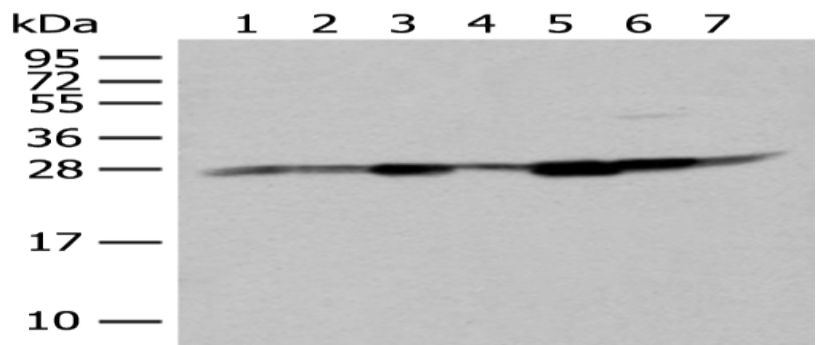
Lysate: 40 µg

Lane 1-7: Hela, HT-29 and HEPG2 cell,  
Human liver tissue, Human fetal liver  
tissue, Mouse liver tissue and Human  
fetal brain tissue lysates

Primary antibody: ml263857(NIPSNAP2  
Antibody) at dilution 1/400

Secondary antibody: Goat anti rabbit IgG  
at 1/8000 dilution

Exposure time: 1 second



**ELISA**

Recommended dilution:5000-10000

联系电话: 4008-898-798, 021-61725725

联系QQ: 2881505695, 2881505696

邮箱: mlbio\_cn@yeah.net

网址: www.mlbio.cn

**mlbio** 酶联生物  
Good elisakit producers  
订购热线: 4008-898-798