

## Anti-FAM84B antibody

<b>Cat. No.</b>	ml263881
<b>Package</b>	25 µl/100 µl/200 µl
<b>Storage</b>	-20°C, pH7.4 PBS, 0.05% NaN <sub>3</sub> , 40% Glycerol

### Product overview

<b>Description</b>	Anti-FAM84B rabbit polyclonal antibody
<b>Applications</b>	ELISA, WB, IHC
<b>Immunogen</b>	Synthetic peptide of human FAM84B
<b>Reactivity</b>	Human
<b>Content</b>	1.32 mg/ml
<b>Host species</b>	Rabbit
<b>Ig class</b>	Immunogen-specific rabbit IgG
<b>Purification</b>	Antigen affinity purification

### Target information

<b>Symbol</b>	FAM84B
<b>Full name</b>	family with sequence similarity 84 member B

**Synonyms** NSE2; BCMP101

**Swissprot** Q96KN1

### **Target Background**

FAM84B (family with sequence similarity 84, member B), also known as NSE2 or BCMP101, is a 310 amino acid protein that is expressed in esophageal squamous cell carcinomas, suggesting a role in tumor development and metastasis. The gene encoding FAM84B maps to human chromosome 8, which consists of nearly 146 million base pairs, houses more than 800 genes and is associated with a variety of diseases and malignancies. Schizophrenia, bipolar disorder, trisomy 8, Pfeiffer syndrome, congenital hypothyroidism, Waardenburg syndrome and some leukemias and lymphomas are thought to occur as a result of defects in specific genes that map to chromosome 8.

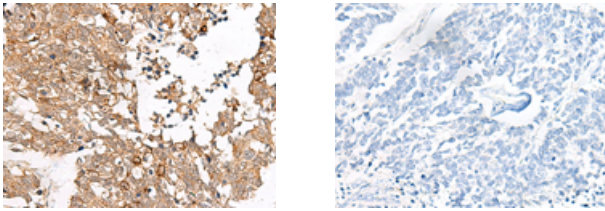
## Applications

### Immunohistochemistry

Predicted cell location: Cytoplasm and Nucleus

Positive control: Human lung cancer

Recommended dilution: 40-200

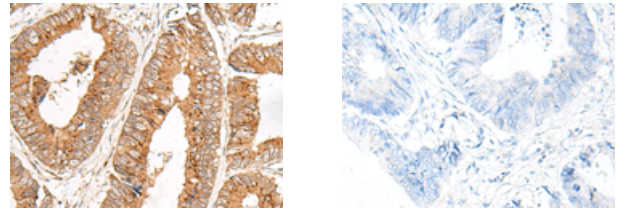


The image on the left is immunohistochemistry of paraffin-embedded Human lung cancer tissue using ml263881(FAM84B Antibody) at dilution 1/45, on the right is treated with synthetic peptide. (Original magnification:  $\times 200$ )

Predicted cell location: Cytoplasm and Nucleus

Positive control: Human colorectal cancer

Recommended dilution: 40-200



The image on the left is immunohistochemistry of paraffin-embedded Human colorectal cancer tissue using ml263881(FAM84B Antibody) at dilution 1/45, on the right is treated with synthetic peptide. (Original magnification:  $\times 200$ )

### Western blotting

Predicted band size: 34 kDa

Positive control: PC3 and HUVEC cell lysates

Recommended dilution: 500-2000

订购热线: 4008-898-798

Gel: 8%SDS-PAGE

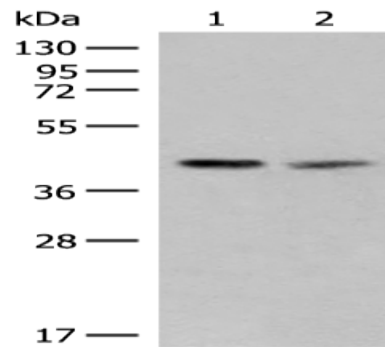
Lysate: 40  $\mu$ g

Lane 1-2: PC3 and HUVEC cell lysates

Primary antibody: ml263881(FAM84B Antibody) at dilution 1/400

Secondary antibody: Goat anti rabbit IgG at 1/8000 dilution

Exposure time: 30 seconds



#### ELISA

Recommended dilution: 5000-10000

联系电话: 4008-898-798, 021-61725725

联系QQ: 2881505695, 2881505696

邮箱: [mlbio\\_cn@yeah.net](mailto:mlbio_cn@yeah.net)

网址: [www.mlbio.cn](http://www.mlbio.cn)