

## 兔抗 CHADL 多克隆抗体

中文名称：兔抗 CHADL 多克隆抗体

英文名称：Anti-CHADL rabbit polyclonal antibody

别名：chondroadherin like; SLRR4B

相关类别：一抗

抗原：CHADL

储存：冷冻（-20℃）

宿主：Rabbit

反应种属：Human

标记物：Unconjugate

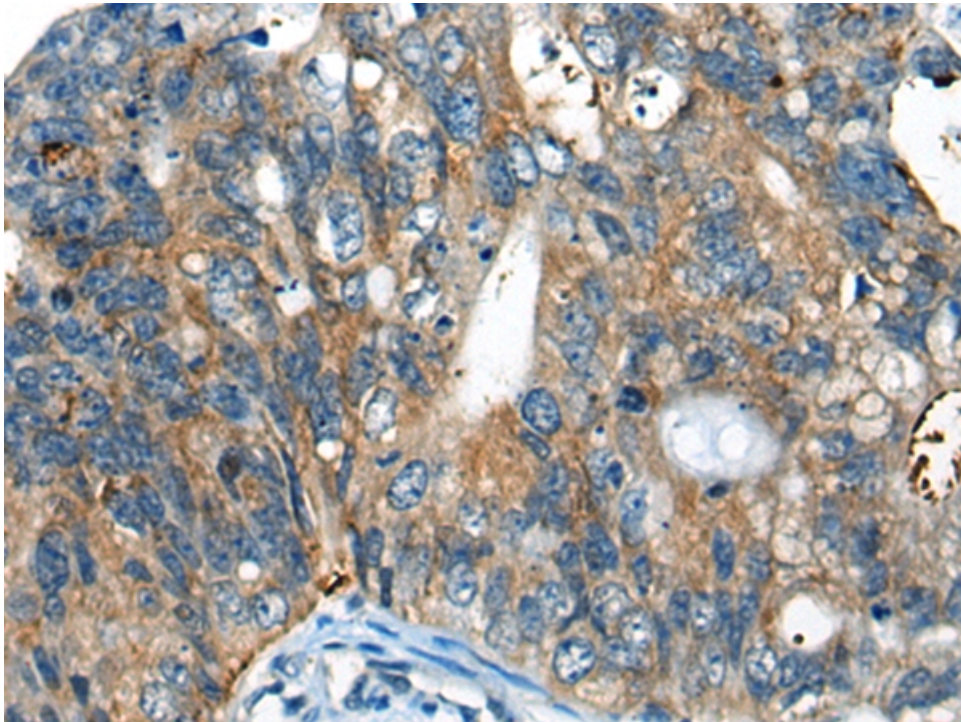
克隆类型：rabbit polyclonal

### 技术规格

#### Background:

Members of the small leucine-rich proteoglycan (SLRP) family are mostly extracellular proteins that function upstream of multiple signaling cascades. They affect intracellular phosphorylation and modulate distinct pathways, such as those driven by Toll-like receptors, TGF $\beta$  and receptor tyrosine kinases. As a member of the SLRP family, CHADL (Chondroadherin-like protein) is a 762 amino acid protein containing 21 LRR (leucine-rich) repeats, which promote protein-ligand interactions. Chondroadherin, a closely related protein, promotes attachment of chondrocytes, osteoblasts and fibroblasts and also plays an important role in the re

	gulation of chondrocyte proliferation and growth. CHADL is a secreted protein that is located in the extracellular space. There are two isoforms of CHADL that exist as a result of alternative splicing events. Potential negative modulator of chondrocyte differentiation. Inhibits collagen fibrillogenesis in vitro. May influence chondrocyte's differentiation by acting on its cellular collagenous microenvironment.
<b>Applications:</b>	ELISA, IHC
<b>Name of antibody:</b>	CHADL
<b>Immunogen:</b>	Synthetic peptide of human CHADL
<b>Full name:</b>	chondroadherin like
<b>Synonyms:</b>	SLRR4B
<b>SwissProt:</b>	Q6NUI6
<b>ELISA Recommended dilution:</b>	5000-10000
<b>IHC positive control:</b>	Human colorectal cancer
<b>IHC Recommend dilution:</b>	20-100



**mlbio** 梅联生物  
Good elisakit producers